



## Fireproof 3D Model Design Grooved Acoustic Panels with Basic Material E1 MDF

### Our Product Introduction

#### Basic Information

- Place of Origin: Guangdong, China
- Brand Name: MQ
- Model Number: MQ
- Minimum Order Quantity: 100 square meters
- Price: CN¥145.47/square meters 100-299 square meters



#### Product Specification

- Warranty: 3 Years
- After-sale Service: Online Technical Support, Onsite Training, Return And Replacement
- Project Solution Capability: Graphic Design, 3D Model Design, Total Solution For Projects
- Application: Bedroom, Concert Hall / Conference Hall / Airport
- Design Style: Modern
- Function: Sound Absorbing
- Basic Material: E1 MDF, FRMDF, Black MDF
- Packing: Carton
- Standard Size: 2440\*132mm/2440\*197mm
- Type: Acoustic Panels
- Thickness: 12/15/18 MM
- Pattern: 124/4,60/4,13/3,14/2,28/4,6/2
- Flame Retardant: Can Meet China Standard Class B1



#### More Images



**MAGIC CUBE**  
ACOUSTIC MATERIALS

# Wooden Grooved Acoustic Panel

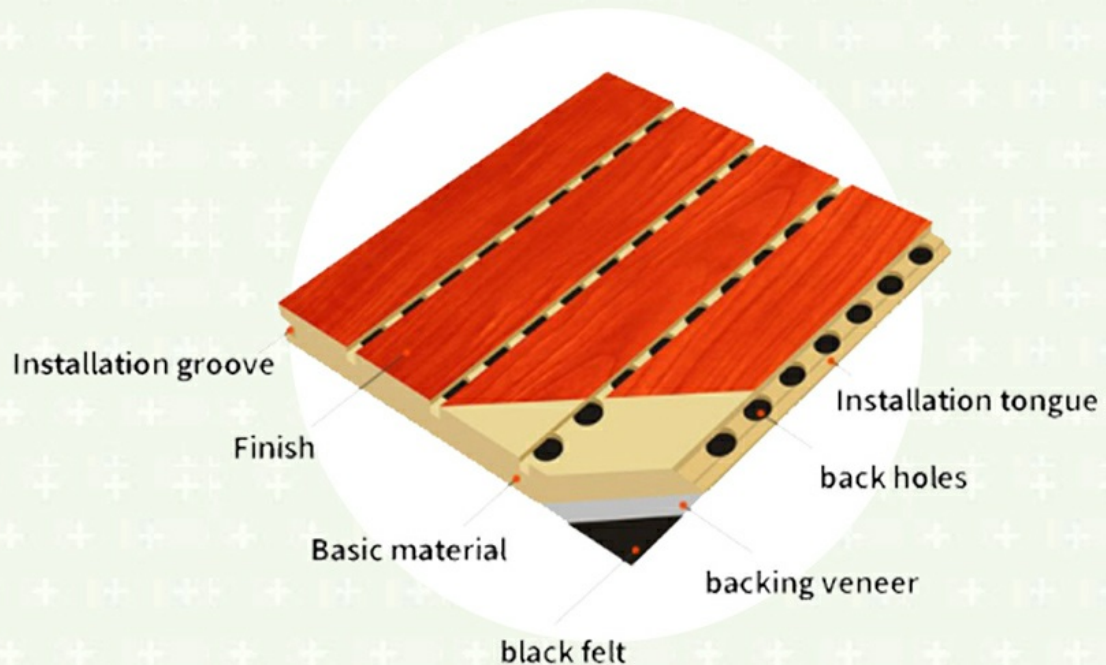
Purify the mind Solve the  
sound problems such as echo



Product Description

product Type	Wooden Grooved Acoustic Panel
Size	2440*132mm,2440*197mm
Thickness	12mm,15mm,18mm
Usage	Interior decoration
Function	Waterproof, Moisture-Proof, Mould-Proof, Fireproof, Decoration Material
Application	interior and exterior wall decoration, like hotel, office; shopping mall; living room, etc
Packing	Pallet or bulk packing
Payment term	Trade Assurance,L/C, T/T, Westen Unionn, PayPal
Delivery Time	15 working days after get payment in advance

# Product Structure





# Specifications



- 1 Basic Material: E1 MDF, FR MDF, Black MDF
- 2 Front Finish: Melamine, Veneer, Paint, HPL
- 3 Back Finish: Black Felt
- 4 Standard Size: 2440x133mm, 2440x197mm
- 5 Formaldehyde Emission: Can meet both China&EU Standard Class E1
- 6 Pattern: 124/4, 60/4, 30/2, 29/3, 28/4, 14/2, 13/3, 9/2, 6/2
- 7 Flame Retardant: Can meet China Standard Class B, BS476 Part 7 Class1, EN13501 Class B etc.



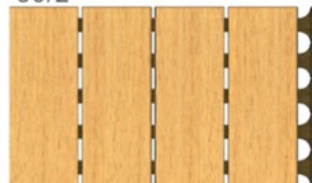
124/4



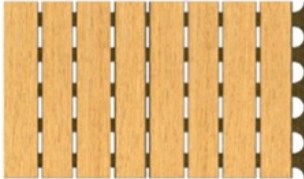
60/4



30/2



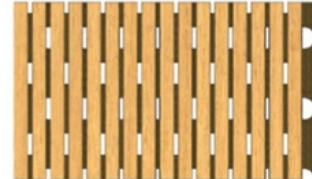
14/2



9/2



6/2



# Surface and Colors



- ① Melamine/ HPL: Pure colors and wooden grain are both available.
- ② Veneer: Normally the veneer is divided into natural veneer and technical veneer and the varnish can be UV or PU painting.
- ③ Paint: Colors can be customized according to Pantone or RAL color number. But there will be slight color difference in each batch.

## COLORS

Pure Colors



Wood Grain



The above is a part of the colors. Please send enquiries for more colors available.

# Product Details

We focus on detail improvement



## High Density Base Material

Special selection of high quality MDF panel. The wood fiber is uniform and meticulous makes the panel durable with high strength.

## Smooth Surface

The self-improved veneer laminating technology makes the veneer and the substrate better laminating, the surface is smooth and beautiful, not easy to crack and deformation, and the service life is long



## Black Acoustic Felt

High quality black acoustic felt on the back side of the panel makes the acoustic performance better and prevent the padding coming out from the panel.

## Precise Cutting Process

The surface and the edge of the panel is clean by standardized production. The tongue and groove is accurated when installtion.



# Product Features

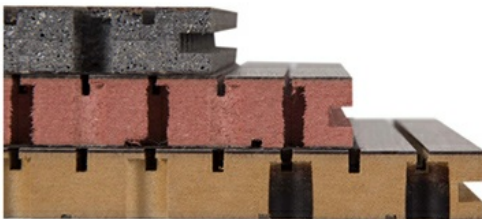
## 1/ Variety Of Finishes



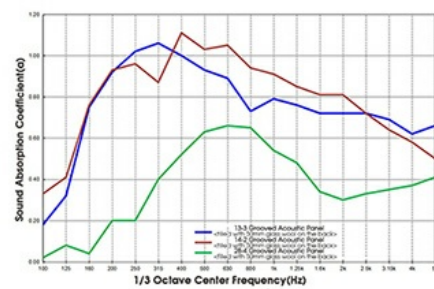
## 2/ Aesthetic Appearance



## 3/ Eco-friendly & Fire Resistant



## 4/ Sound Absorption And Noise Reduction

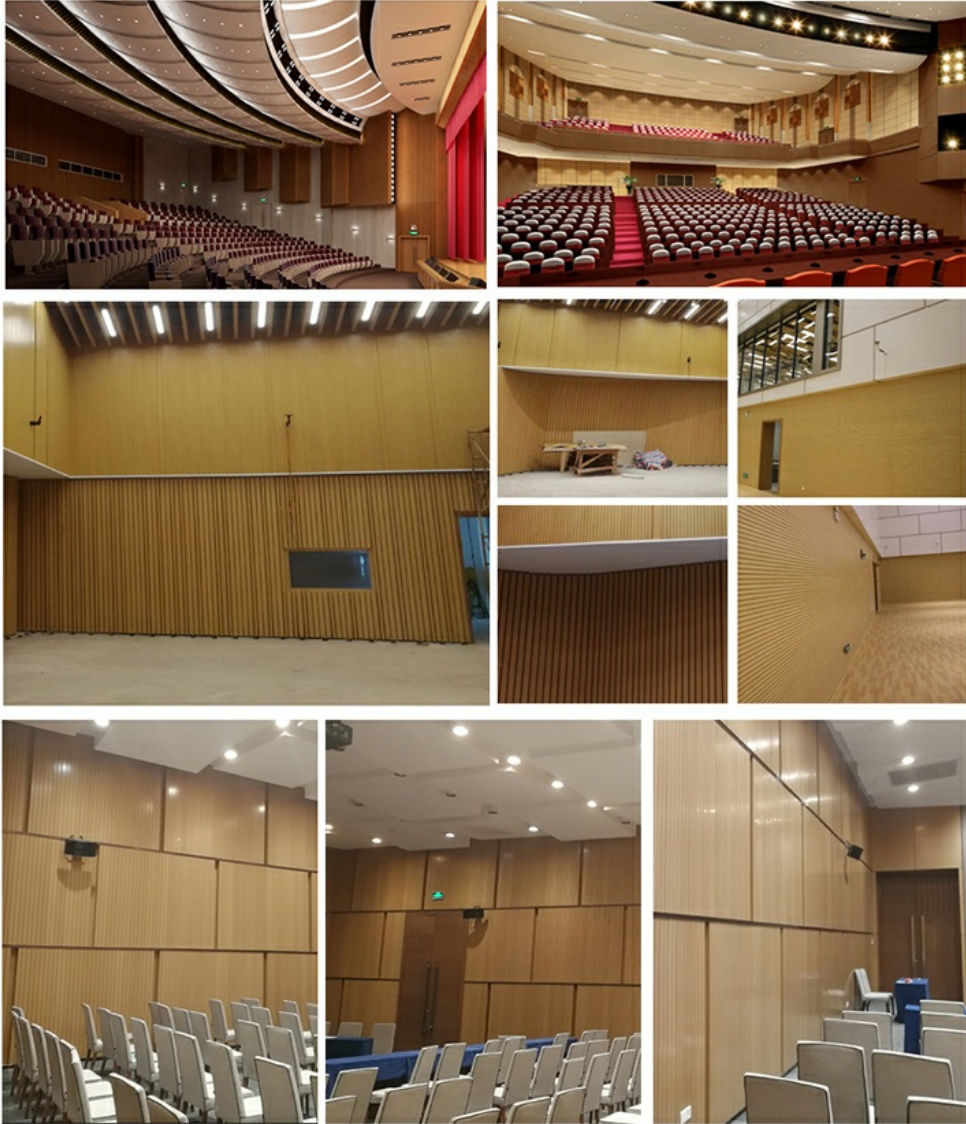




# Applications

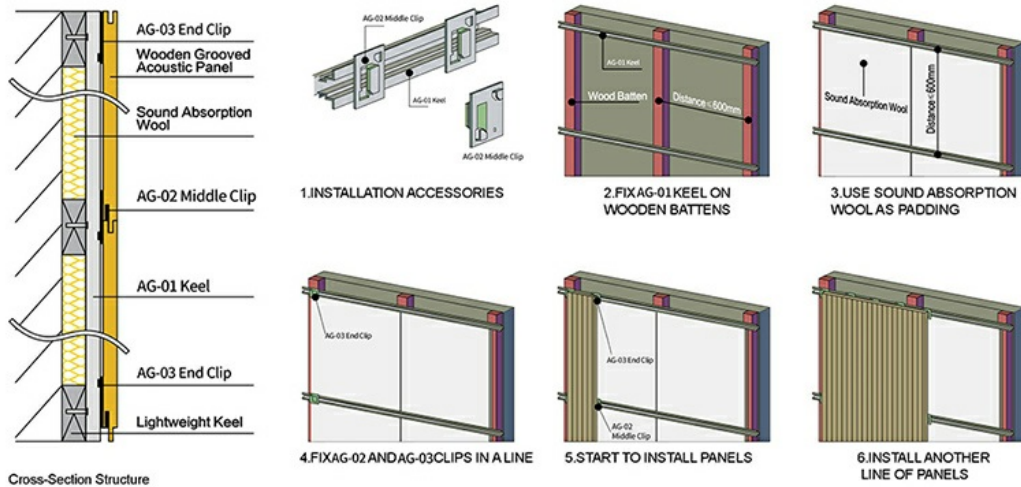


- ① Professional recording space: recording studios, broadcast studios, rehearsal rooms, etc.
- ② Large-scale music space: theaters, concert halls, KTV rooms, etc.
- ③ Office space: office buildings, meeting rooms, hotels, etc.





# Installation Guidance



INSTALLATION: LIGHTWEIGHT STEEL KEEL SYSTEM



## About Us

Magic Cube (MQ) Acoustics is a professional acoustic solution provider, integrating acoustic material manufacturing, architectural acoustical environment construction and industrial noise control. We are committed to the combination of Acoustics & Aesthetic, to offering our clients the best acoustic solution with



high quality acoustic material.

In order to meet the higher needs of customers, we has introduced advanced production equipment which has fully guaranteed product quality and technology. After 5 years of rapid development, we has an annual output of more than 500,000 square meters of





## FAQ

Semi-Automatic PET Bottle Blowing Machine Bottle Making Machine Bottle Moulding Machine  
PET Bottle Making Machine is suitable for producing PET plastic containers and bottles in all shapes.

Q1. Can I have a sample order for polyester panel?

A: Yes, we welcome sample order to test and check quality.

Q2. What about the lead time?

A: Sample needs 3-7 days, mass production time needs 1-3 weeks for order quantity more than

Q3. Do you have any MOQ limit for polyester panel order?

A: Low MOQ, 100 sqm is available

Q4. How do you ship the goods and how long does it take to arrive?

A: We usually ship by sea. It usually takes 2-4 weeks to arrive.

Q5. How to proceed an order for polyester panel?

A: Firstly let us know your requirements or application.

Secondly We quote according to your requirements or our suggestions.

Thirdly customer confirms the samples and places deposit for formal order.

Fourthly We arrange the production.

Q6: Do you offer guarantee for the products?

A: Yes, we offer 1 years warranty to our products.



**Guangzhou Mq Acoustic Materials Co., Ltd**



18022418653



sales002@mq-acoustics.com



acousticpanelwalls.com

KeZhu Business Building, Zhuji Road, TianHe District, GuangZhou, China