



## Eco High Density Polyester Fiber Acoustic Panel PET Felt Sound Absorbing Ceiling Acoustic Panels

### Our Product Introduction

for more products please visit us on [acousticpanelwalls.com](http://acousticpanelwalls.com)

#### Basic Information

- Place of Origin: Guangdong, China
- Brand Name: Magic Cube
- Model Number: wooden grooved acoustic panel
- Minimum Order Quantity: 100 square centimeters
- Price: CN¥58.48/square centimeters 100-298 square centimeters



#### Product Specification

- Warranty: 3 Years
- After-sale Service: Online Technical Support, Onsite Installation, Onsite Inspection, Free Spare Parts, Return And Replacement, Other
- Project Solution Capability: Graphic Design, 3D Model Design, Total Solution For Projects, Cross Categories Consolidation
- Application: Office Building
- Design Style: Modern
- Product Name: Wooden Grooved Acoustic Panel
- Basic Material: E1 MDF, FR MDF, Black MDF
- Front Finish: Melamine, Veneer, Paint, HPL
- Back Finish: Black Felt
- Size: 2440x132mm, 2440x197mm
- Thickness: 12/15/18 Mm
- Formaldehyde Emission: China&EU Standard Class E1



#### More Images



## Product Description

### Product Description

Wooden grooved acoustic panel is one kind of sound-absorbing panels with grooves on the surface and holes on the back. The back is covered with black felt to prevent the internal acoustic foam from being exposed, The patterns of the panels can be customized and different patterns can be selected to meet the requirements according to the interior design and acoustic effects. It is the panel that provides the acoustic arrangement and allows the sound quality to be maximized.

<b>Product Name</b>	Wooden Grooved Acoustic Panel	<b>Color</b>	48 colors
<b>Brand</b>	Magic Cube	<b>Feature</b>	Aesthetic appearance Eco-friendly, fire resistant, Sound absorption and noise reduction
<b>Modes of packing</b>	Packed in cartons	<b>Place of Product</b>	Guangdong Province, China
<b>Fabric</b>	E1 MDF, FR MDF, Black MDF	<b>Modes of packing</b>	Packed in cartons
<b>Size</b>	2440X132mm, 2440X197mm	<b>Finishes</b>	Variety of finishes

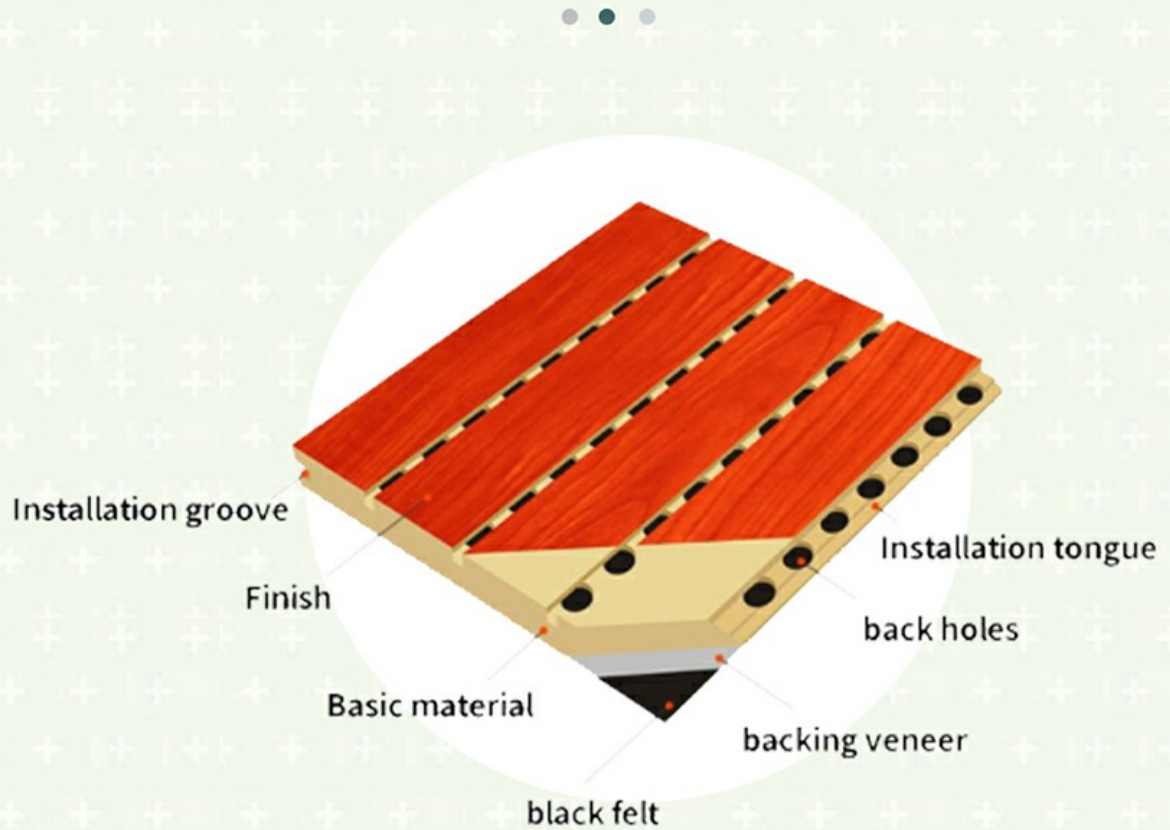


# Wooden Grooved Acoustic Panel

Purify the mind Solve the  
sound problems such as echo



# Product Structure





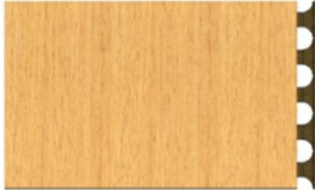
# Specifications



- 1 Basic Material: E1 MDF, FR MDF, Black MDF
- 2 Front Finish: Melamine, Veneer, Paint, HPL
- 3 Back Finish: Black Felt
- 4 Standard Size: 2440x133mm, 2440x197mm
- 5 Formaldehyde Emission: Can meet both China&EU Standard Class E1
- 6 Pattern: 124/4, 60/4, 30/2, 29/3, 28/4, 14/2, 13/3, 9/2, 6/2
- 7 Flame Retardant: Can meet China Standard Class B, BS476 Part 7 Class1, EN13501 Class B etc.



124/4



60/4



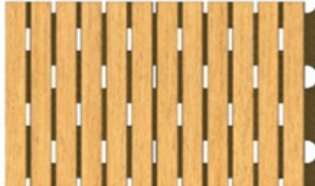
30/2



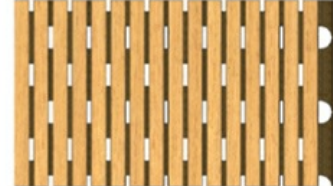
14/2



9/2



6/2



# Surface and Colors



- ① Melamine/ HPL: Pure colors and wooden grain are both available.
- ② Veneer: Normally the veneer is divided into natural veneer and technical veneer and the varnish can be UV or PU painting.
- ③ Paint: Colors can be customized according to Pantone or RAL color number. But there will be slight color difference in each batch.

## COLORS

Pure Colors



Wood Grain



The above is a part of the colors. Please send enquiries for more colors available.

# Product Details

We focus on detail improvement



## High Density Base Material

Special selection of high quality MDF panel. The wood fiber is uniform and meticulous makes the panel durable with high strength.

## Smooth Surface

The self-improved veneer laminating technology makes the veneer and the substrate better laminating, the surface is smooth and beautiful, not easy to crack and deformation, and the service life is long



## Black Acoustic Felt

High quality black acoustic felt on the back side of the panel makes the acoustic performance better and prevent the padding coming out from the panel.

## Precise Cutting Process

The surface and the edge of the panel is clean by standardized proudction. The tongue and groove is accurated when installtion.



# Product Features

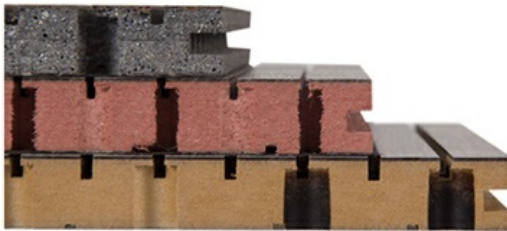
## 1/ Variety Of Finishes



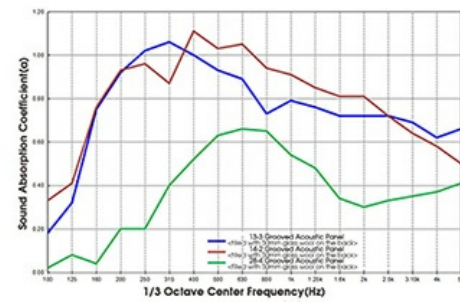
## 2/ Aesthetic Appearance



## 3/ Eco-friendly&Fire Resistant



## 4/ Sound Absorption And Noise Reduction

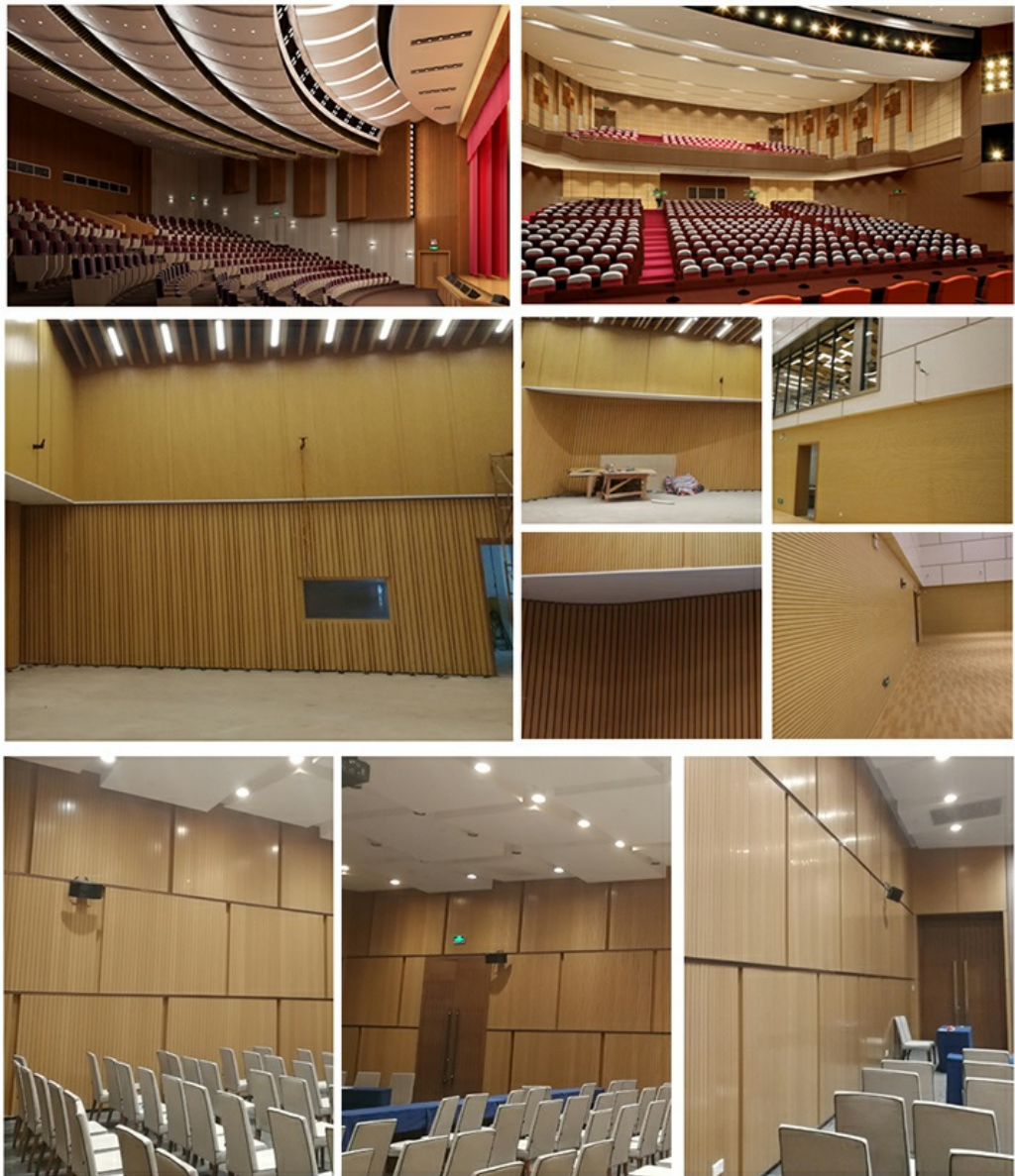




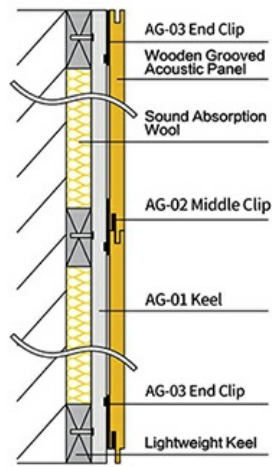
# Applications



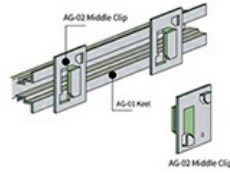
- ① Professional recording space: recording studios, broadcast studios, rehearsal rooms, etc.
- ② Large-scale music space: theaters, concert halls, KTV rooms, etc.
- ③ Office space: office buildings, meeting rooms, hotels, etc.



# Installation Guidance



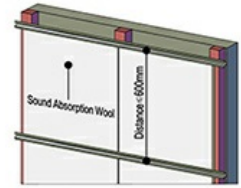
Cross-Section Structure



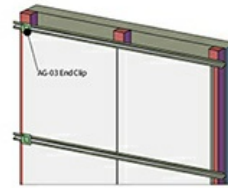
1. INSTALLATION ACCESSORIES



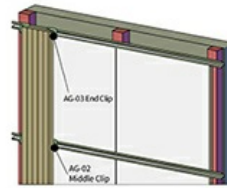
2. FIX AG-01 KEEL ON WOODEN BATTENS



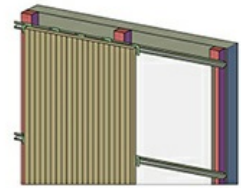
3. USE SOUND ABSORPTION WOOL AS PADDING



4. FIX AG-02 AND AG-03 CLIPS IN A LINE

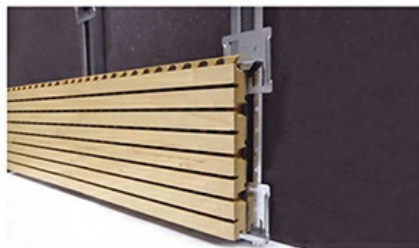
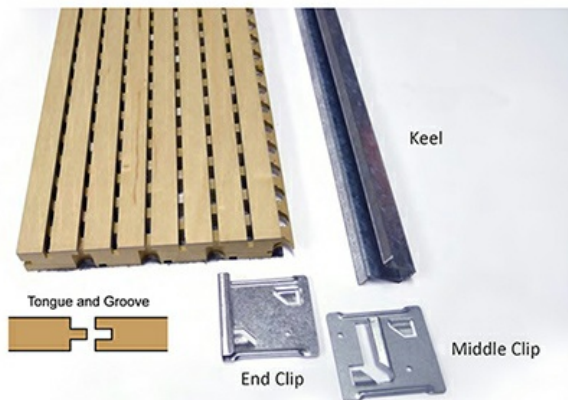


5. START TO INSTALL PANELS



6. INSTALL ANOTHER LINE OF PANELS

INSTALLATION: LIGHTWEIGHT STEEL KEEL SYSTEM



Certificate

# CERTIFICATION

MAGIC CUBE Acoustics has focused on the R&D, production and sales of various sound absorption and sound insulation products. Our products have passed CE, ISO9001 & SGS certificate. MAGIC CUBE has more than a dozen patented acoustic technology products, and more than 30 domestic and international test reports.



## Company Introduction

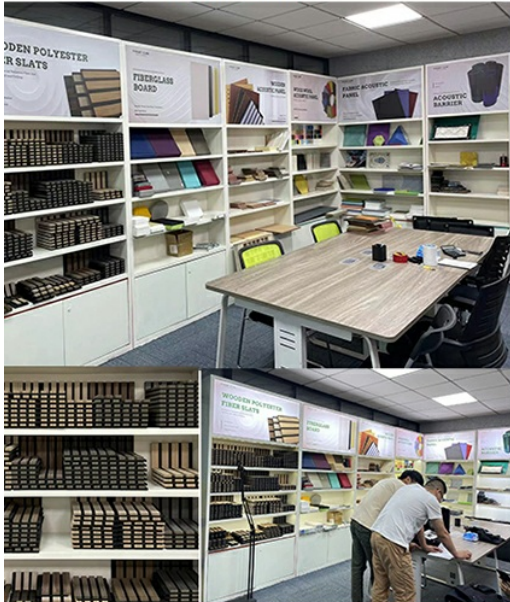


# ABOUT US

Magic Cube(MQ)Acoustics is a professional acoustic solution provider, integrating acoustic material manufacturing, architectural acoustical environment construction and industrial noise control. We are committed to the combination of Acoustics&Aesthetic, to offering our clients the best acoustic solution with high quality acoustic material.



The exhibition hall



In order to meet the higher needs of customers, we have introduced advanced production equipment which has fully guaranteed product quality and technology. After 5 years of rapid development, we have an annual output of more than 500,000 square meters of various acoustic materials.

## TEAM ACTIVITY





# EXHIBITION



## Our Factory

In order to apply our research and development achievements to society, the Magic Cube Acoustic Group has an area of over 15,000 square meters, with a building area exceeding 15,000 square meters. Our production facilities are advanced and equipped with state-of-the-art computer-aided design software. We have over 100 different-sized machines, including a polyester board production line, an intelligent engraving machine production line, a 3D hotpressing production line, an acoustic product deep processing production line, and a spray production line.

# OUR FACTORY



Cutting process



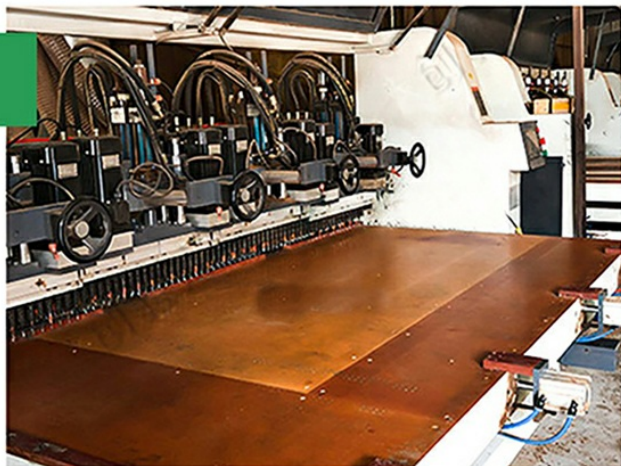




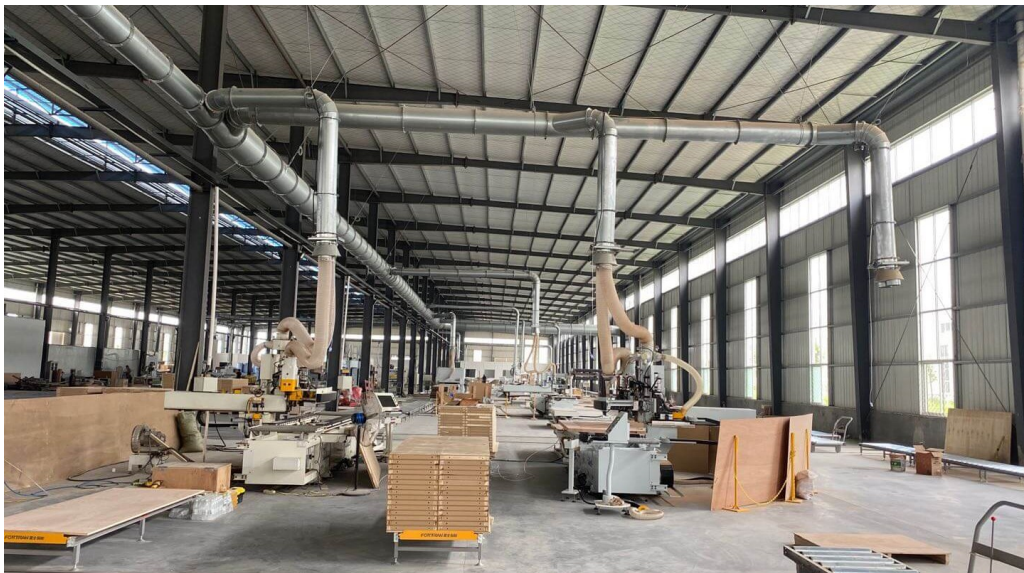
Slotting process



Punching process











### **Our Services & Strength**

Our company operates under the ISO9001 quality system, with a team of experienced managers and quality inspectors responsible for process and production management, ensuring that our products meet high-quality standards. We also have a technical team composed of professional engineers and research experts, providing solid support for production. Our company primarily produces and promotes our own developed products, and to diversify our development, we have also introduced production lines for sound proofing and vibration reduction series products.

### **FAQ**



#### 1. who are we?

We are based in Guangdong, China, start from 2018, sell to Domestic Market(50.00%), North America(15.00%), Eastern Europe(6.00%), Western Europe(6.00%), Northern Europe(6.00%), Southern Europe(5.00%), Mid East(3.00%), South America(2.00%), Southeast Asia(2.00%), Eastern Asia(2.00%), South Asia(2.00%), Oceania(1.00%). There are total about 11-50 people in our office.

#### 2. how can we guarantee quality?

Always a pre-production sample before mass production;  
Always final inspection before shipment;

#### 3. what can you buy from us?

acoustic panel, fabric acoustic panel, grooved acoustic panel, perforated acoustic panel, movable partition

#### 4. why should you buy from us not from other suppliers?

Magic Cube(MQ) Acoustics is a professional acoustic solution provider, integrating acoustic material manufacturing, architectural acoustical environment construction and industrial noise control.

#### 5. what services can we provide?

Accepted Delivery Terms: FOB, CFR, EXW, DDP, Express Delivery, DAF;  
Accepted Payment Currency: USD, EUR, JPY, CAD, AUD, HKD, GBP, CNY, CHF;  
Accepted Payment Type: T/T, MoneyGram, Credit Card, Western Union, Cash;



**Guangzhou Mq Acoustic Materials Co., Ltd**



18022418653



sales002@mq-acoustics.com



acousticpanelwalls.com

KeZhu Business Building, Zhuji Road, TianHe District, GuangZhou, China