

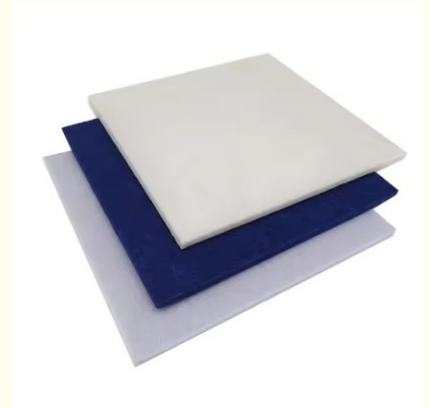


High Density Sound Proof Indoor For Kids Decorate Self Adhesive Hexagon Board Pet Acoustic Panels 100% Polyester Fabric Fiber

Our Product Introduction

Basic Information

- Place of Origin: Guangdong, China
- Brand Name: Magic Cube
- Certification: CE
- Model Number: PET fiber panel
- Minimum Order Quantity: 50 square centimeters
- Price: CN¥58.85/square centimeters 50-498 square centimeters

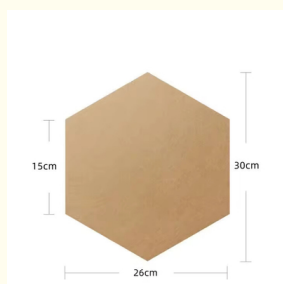


Product Specification

- Warranty: 3 Years
- After-sale Service: Online Technical Support, Onsite Installation, Onsite Training, Onsite Inspection, Free Spare Parts, Return And Replacement
- Project Solution Capability: Graphic Design, 3D Model Design, Total Solution For Projects, Cross Categories Consolidation
- Application: Office Building
- Design Style: Modern
- Material: Polyester Fiber
- Color: 48 Colors
- Thickness: 8/9/12/18/24mm Customization
- Shape: Customized Shape
- Packing: Carton
- Flame Retardant: B1 Grade
- Weight: 4/5/5.5/6/6.5/7



More Images



Product Description

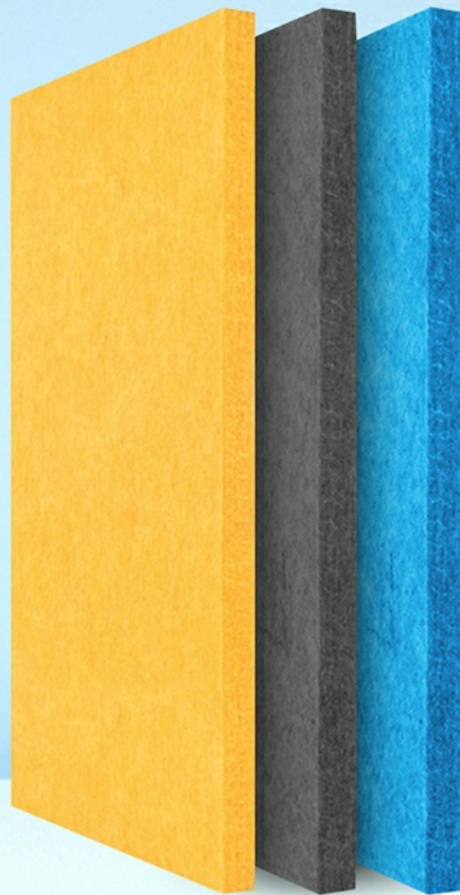
Polyester fiber acoustic panel are made of fiber filaments through high-tech hot pressing. It is a new type of environmentally friendly sound-insulating material which can directly contact to skin but will not harm the human body. Polyester fiber acoustic panel has various densities and good air permeability. It is an ideal product in sound absorption and heat insulation materials. The highest sound absorption coefficient can reach 0.9 or more in the range of 125~4000HZ(refers to the installation structure). Used as an indoor sound-absorbing material,it can effectively shorten the reverberation time to improve the clarity of speech. It is widely used in the field of building decoration.

Product Overview

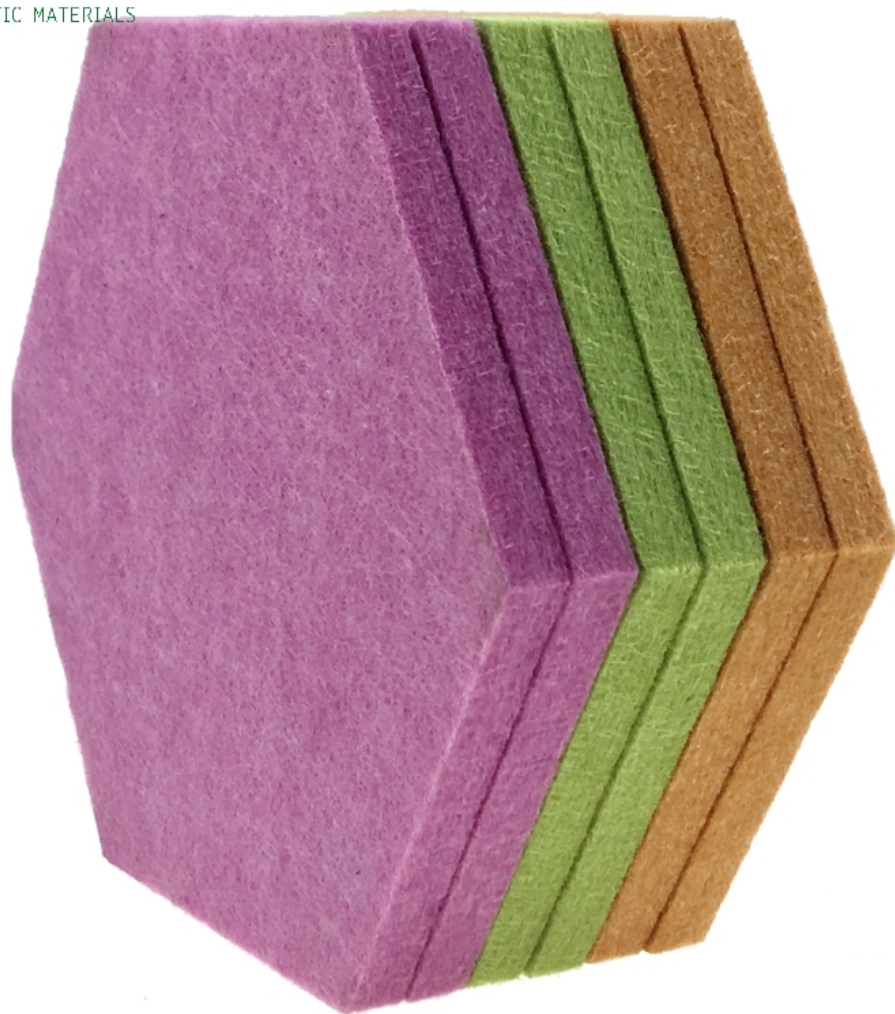
- | | |
|------------------------------------|---------------------------|
| Made from recycled plastic bottles | Improved acoustic effect |
| Durable and Customizable | Easy to mount and process |
| Extra thickness | Impact-resistant |

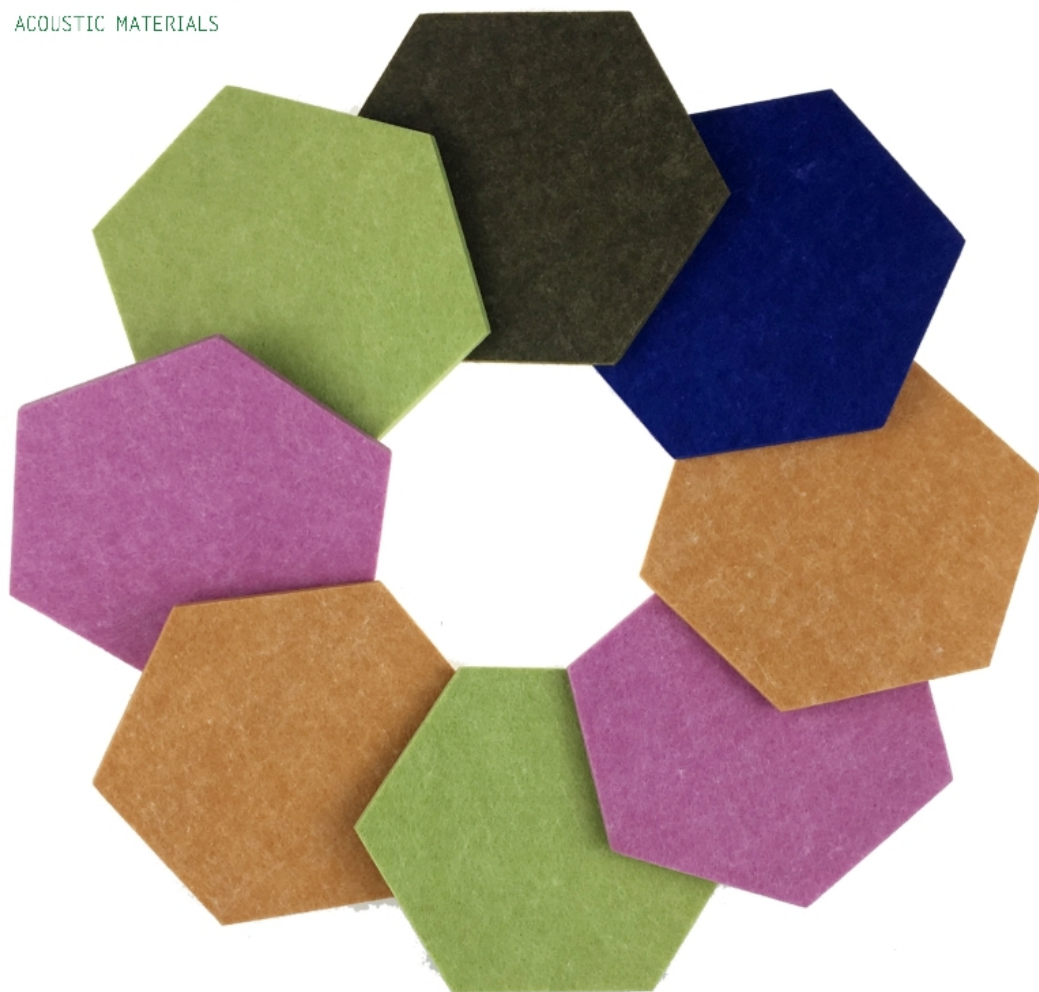
MAGIC CUBE
ACOUSTIC MATERIALS

Polyester Fiber Acoustic Panel



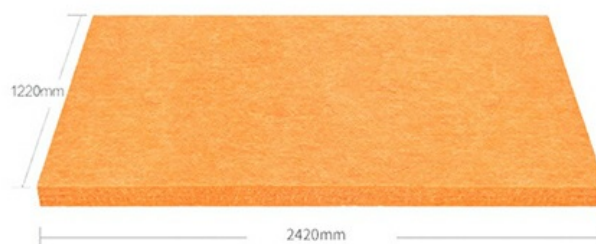






Specifications

- 1 Material:100% polyester fiber
- 2 Size:1220mmx2420mm
- 3 Thickness:9mm/12mm/24mm
- 4 Density:1200g-3700g/m³
- 5 Edge:square or beveled
- 6 Eco-Friendly:Class E1
- 7 Permanent flame retardant:Can meet ASTM E84-2016

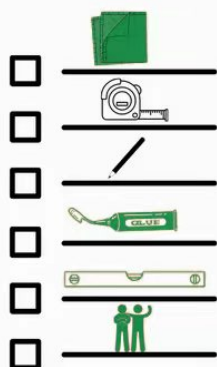


Normal size in stock, other size, please contact us.

MAGIC CUBE
ACOUSTIC MATERIALS

PET felt acoustic panels-installation guide

What i need:



- 1 Clean the wall**

 Use a damp cloth to remove any dust from the wall.
- 2 Measure & mark**

 Determine the position of the first panel, plot a vertical and a horizontal line to serve as the start of the panel arrangement.
- 3 Apply glue**

 Lie the first panel on the flat surface with the front side facing down and apply glue on the backside as shown above.
- 4 Wait**

 2- 10 mins.
 Depending on the glue that you use, wait for the recommended activation time.
- 5 Place, level & hold**

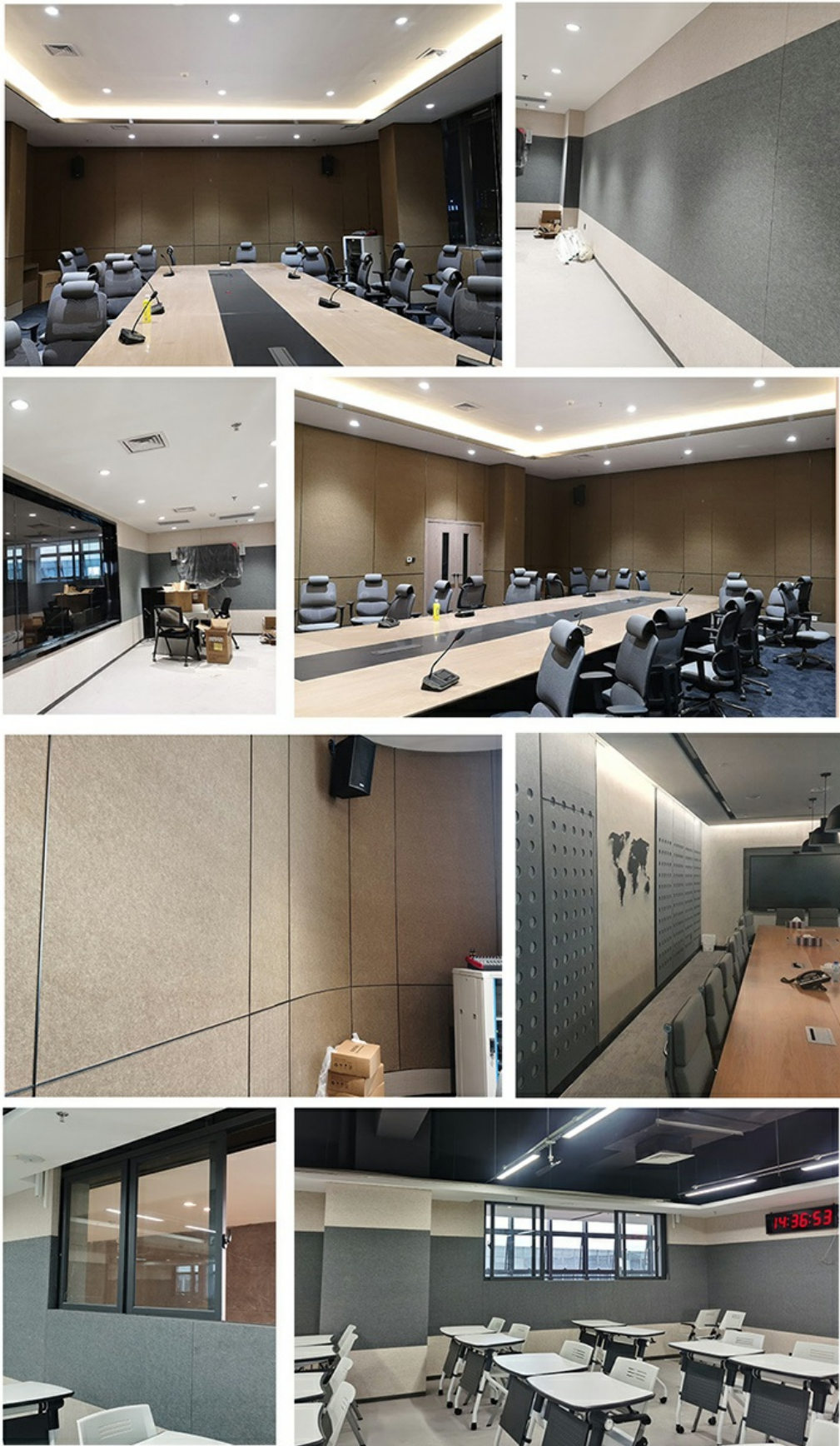
 Place, level and hold the panel against the wall for at least 2 minutes while the glue cures.
- 6 Repeat**

 Subsequent panels are fitted with a 2 mm to 5 mm gap between each other. Follow the guide from step 3 to 5 for each panel.
- 7 Wait to dry**

 24 HOURS
 Do not lean furniture or other heavy items on the newly glued panels for at least 24 hours.
- 8 ENJOY**

 After 24 hours have passed, you can clean your new panels with soft damp cloth and enjoy improved acoustic environment.

Applications



Warranty	3 Years
After-sale Service	Free Marine Insurance, Cargo Tracking, Arrival Reminder, Installation Instruction
Project Solution Capability	Project Design, Material Production, Shipping & Delivery, Onsite Installation
Application	Office Building
Design Style	Modern



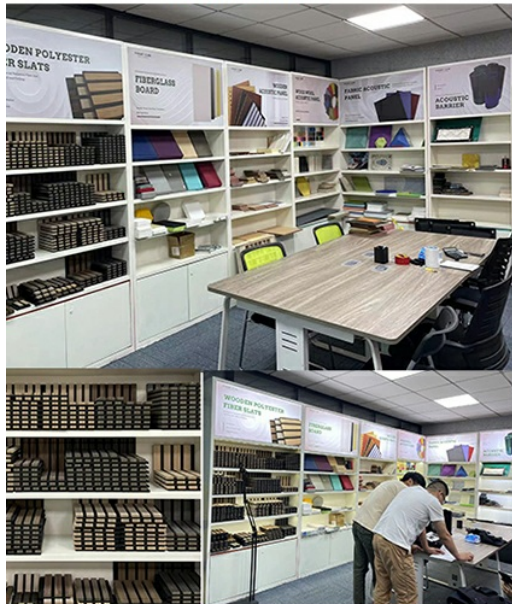
Company Profile

ABOUT US

Magic Cube(MQ)Acoustics is a professional acoustic solution provider, integrating acoustic material manufacturing, architectural acoustical environment construction and industrial noise control. We are committed to the combination of Acoustics&Aesthetic, to offering our clients the best acoustic solution with high quality acoustic material.



The exhibition hall



In order to meet the higher needs of customers, we have introduced advanced production equipment which has fully guaranteed product quality and technology. After 5 years of rapid development, we have an annual output of more than 500,000 square meters of various acoustic materials.

TEAM ACTIVITY



Our factory

In order to apply our research and development achievements to society, the Magic Cube Acoustic Group has an area of over 15,000 square meters, with a building area exceeding 15,000 square meters. Our production facilities are advanced and equipped with state-of-the-art computer-aided design software. We have over 100 different-sized machines, including a

A-SME 江苏阿斯特新材料有限公司

A-SME 'MAGIC CUBE'
江苏阿斯特新材料有限公司
JIANGSU ASME NEW MATERIALS CO., LTD

20000 m²
Factory Area

300+
Acoustics Cases

100+
Employee

A collage of nine images showing various stages of a wood processing factory. The images include: a large warehouse filled with stacks of raw wood; a worker operating a large industrial machine; a worker handling a large stack of processed wood; a worker operating a machine with a yellow safety guard; a worker operating a machine with a yellow safety guard; a worker operating a machine with a yellow safety guard; a worker operating a machine with a yellow safety guard; a worker operating a machine with a yellow safety guard; and a worker operating a machine with a yellow safety guard.







EXHIBITION



Our Services & Strength

Our company operates under the ISO9001 quality system, with a team of experienced managers and quality inspectors responsible for process and production management, ensuring that our products meet high-quality standards. We also have a technical team composed of professional engineers and research experts, providing solid support for production. Our company primarily produces and promotes our own developed products, and to diversify our development, we have also introduced production lines for sound proofing and vibration reduction series products.

FAQ

1. who are we?

We are based in Guangdong, China, start from 2018, sell to Domestic Market(50.00%), North America(15.00%), Eastern Europe(6.00%), Western Europe(6.00%), Northern Europe(6.00%), Southern Europe(5.00%), Mid East(3.00%), South America(2.00%), Southeast Asia(2.00%), Eastern Asia(2.00%), South Asia(2.00%), Oceania(1.00%). There are total about 11-50 people in our office.

2. how can we guarantee quality?

Always a pre-production sample before mass production;
Always final Inspection before shipment;

3. what can you buy from us?

acoustic panel, fabric acoustic panel, grooved acoustic panel, perforated acoustic panel, movable partition

4. why should you buy from us not from other suppliers?

Magic Cube(MQ) Acoustics is a professional acoustic solution provider, integrating acoustic material manufacturing, architectural acoustical environment construction and industrial noise control.

5. what services can we provide?

Accepted Delivery Terms: FOB, CFR, EXW, DDP, Express Delivery, DAF;
Accepted Payment Currency: USD, EUR, JPY, CAD, AUD, HKD, GBP, CNY, CHF;
Accepted Payment Type: T/T, MoneyGram, Credit Card, Western Union, Cash;



Guangzhou Mq Acoustic Materials Co., Ltd



18022418653



sales002@mq-acoustics.com



acousticpanelwalls.com

KeZhu Business Building, ZhuJi Road, TianHe District, GuangZhou, China