



## 2400\*600\*21 mm/ Customized Wooden Slat Acoustic Panel Aku Panel for Exhibition Spaces

### Our Product Introduction

#### Basic Information

- Place of Origin: GUA
- Brand Name: MQ
- Certification: CE
- Minimum Order Quantity: 100 square meters
- Price: \$28.90/square meters 100-199 square meters
- Packaging Details: Pallet
- Supply Ability: 5000 Square Meter/Square Meters per Month

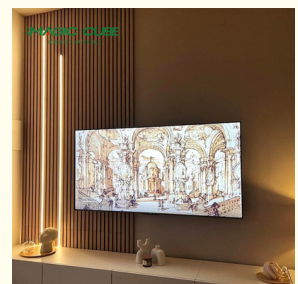
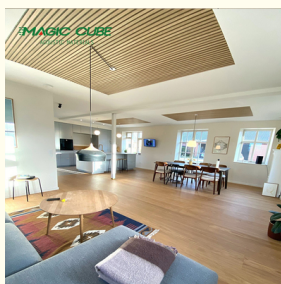


#### Product Specification

- Warranty: 2 Years
- After-sale Service: Online Technical Support
- Project Solution Capability: Graphic Design, 3D Model Design, Total Solution For Projects
- Application: Apartment, Bedroom, living Room
- Design Style: Modern
- Product Name: Wood Slat Acoustic Panel
- Standard Size: 2400\*600\*21 Mm/ Customized
- Polyester Thickness: 9mm/12mm
- Finish: Melamine, Veneer, HPL, Coating
- Pattern: MDF 27mm, Edge To Edge 13mm / Customized
- Type: Sound Absorption Acoustic Panel
- Brand Name: MQ
- Weight: 14kg/pcs



#### More Images



## Product Description

### Product Description

**MQ acoustic wooden slat wall panels** range offers a luxury quality, state of the art, noise-reducing wood panelling solution. Each panel has been handcrafted not only to transform projects visually but also to create a more quiet, comfortable environment. The range features eight unique finishes, from clean, modern textures, through to warm rustic wood character. While each panel is created from only responsibly sourced.

Standard size	2400/2700*600*21.5mm / customized
Finish	Melamine/Veneer/Painting
Material	MDF + Polyester Fiber
Pattern	MDF 27mm, Edge to edge 13mm/customized
Function	Sound absorption, Interior decoration
NRC	0.85~0.94, SGS Test for polyester panel



### Inspiration

Create a modern space and drastically improve the acoustics within your room.

The Akupanel was created with the purpose of improving peoples favorite spaces. If you have ever been in a room with bad acoustics, then you know the problem – bad acoustics can drive you crazy! But now you can do something about it, while also improving the looks in your room. Imagine a slat wall on an end wall in your livingroom or on your ceiling. It would not only dampen the sound – surely it would also provide you with a steady flow of compliments from everyone who sees it.



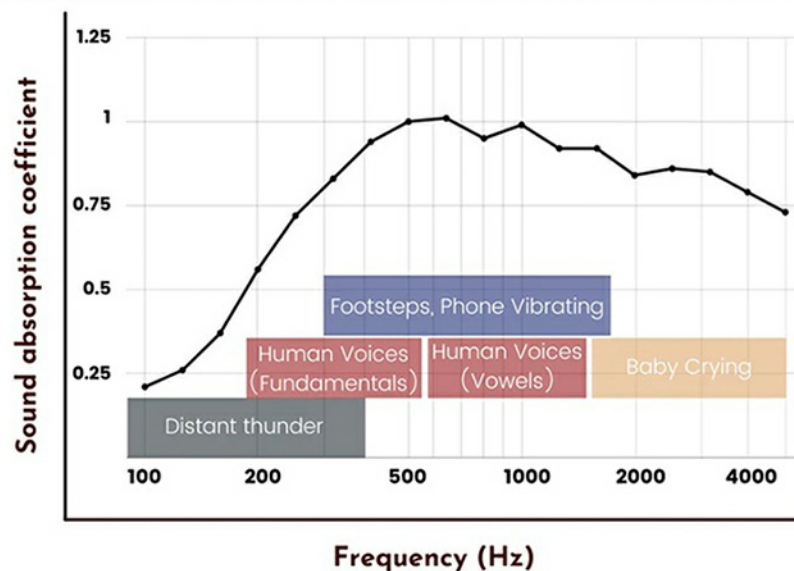
## Sound insulation

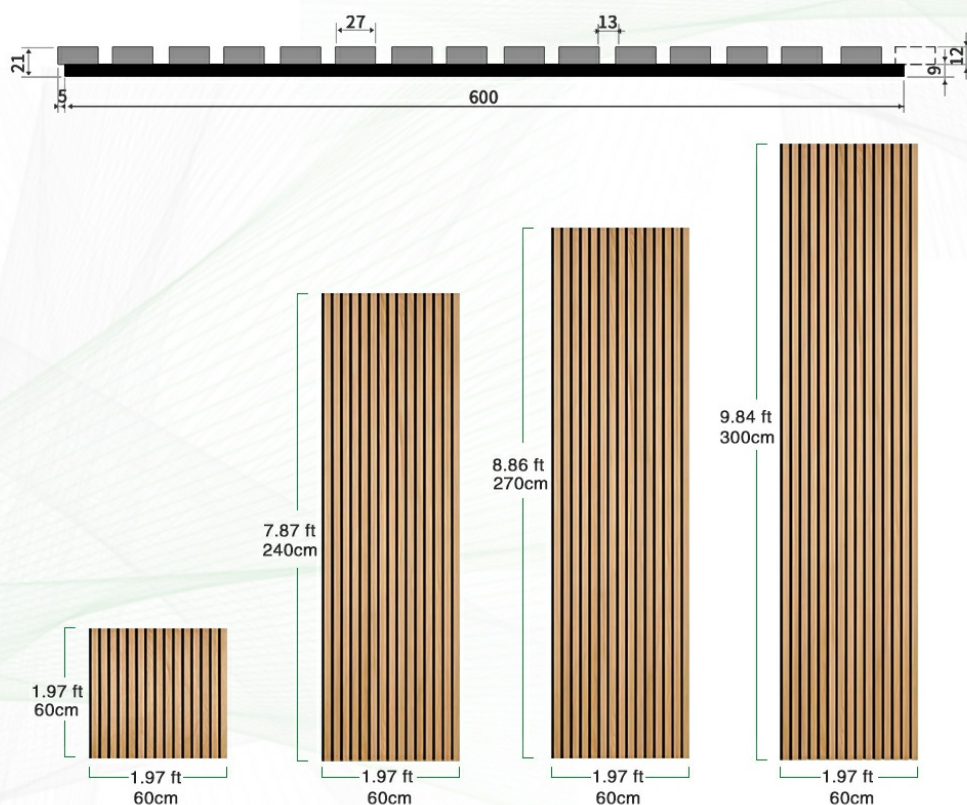
One of the benefits of wall panels is their ability to dampen sound. This is ideal if you live in a busy neighborhood and struggle with traffic noise or noisy neighbors. Wall panels help reduce these noises, allowing for a better sleep experience. Additionally, wall panels can also minimize echo in the room, making it less hollow and noisy-sounding.

## Class A Sound Absorption

Tired of your home sounding like an echo chamber?

Each Slat Acoustics Panel absorbs up to **100% of sound frequencies between 500-1000Hz**, making your space sound naturally warm and welcoming.





## HOT TREND AKUPANEL COLOR





## AKUPANEL SPECIFICATION

Beautiful wood panels with the added benefit of superior sound absorption.

Each panel is faced with real wood veneer, a metal, a custom stain/paint /print, or wrapped in a solid color/wood grain pattern to complete your design.

### SURFACE VENEER

- natural wood finish
- Engineer wood finish
- Melamine finish

### PET FELT PANEL

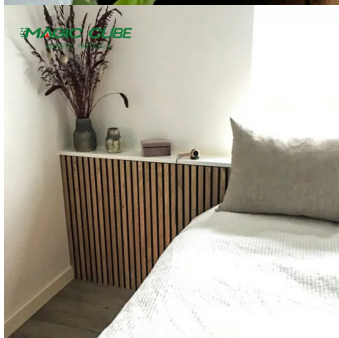
- black
- Grey

### MDF PANEL

- E1 mdf
- EO mdf

See how our customers have used the Akupanel.



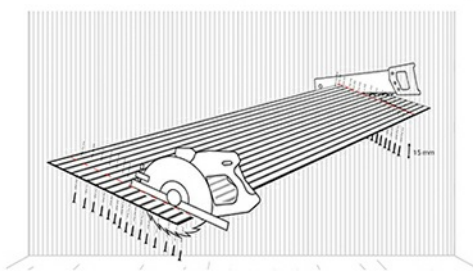




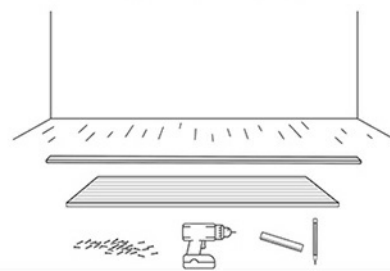
## About Installation

### FULLY CUSTOMIZABLE

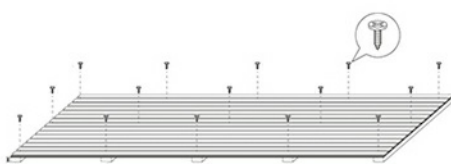
Make it Yours From headboards, to TV walls, and anything in between, you can easily cut Willow Panels by hand to perfectly suit your project.



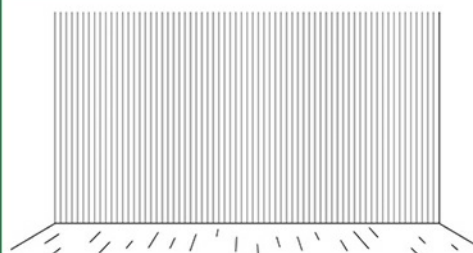
1



2



3



4

## why we love this product:

### ① Look

It simply looks great and can transform a room. Great as a feature wall to add interest in domestic and commercial environments.

### ② Feel

Order a sample to feel for yourself but there is a lovely texture to the face of the slats of this product because of a unique veneer pressing process.

### ③ Installation Ease

Simply offer the panel to the wall and use black fixings which are barely visible through the black PET backing.

### ④ Value

Combining a sound absorbing PET backing and timber slats; there are few products in the market that offer this kind of aesthetic versus the material cost.

### ⑤ Quality

This is the original, high quality product manufactured in China.

## Packing & Delivery

---

# Package&Transport

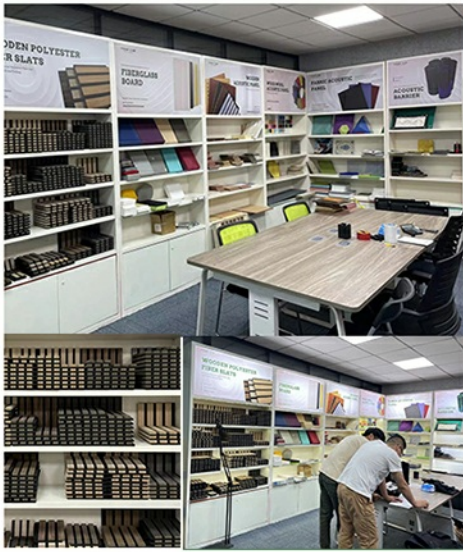


# About the Company

Magic Cube(MQ)Acoustics is a professional acoustic solution provider, integrating acoustic material manufacturing, architectural acoustical environment construction and industrial noise control. We are committed to the combination of Acoustics&Aesthetic, to offering our clients the best acoustic solution with high quality acoustic material.



The exhibition hall



In order to meet the higher needs of customers, we have introduced advanced production equipment which has fully guaranteed product quality and technology. After 5 years of rapid development, we have an annual output of more than 500,000 square meters of various acoustic materials.

## Certification

MAGIC CUBE Acoustics has focused on the R&D, production and sales of various sound absorption and sound insulation products. Our products have passed CE, ISO9001 & SGS certificate. MAGIC CUBE has more than a dozen patented acoustic technology products, and more than 30 domestic and international test reports.



## Team Activity



## Exhibition



## FAQ

### What do I need for installation?

For installation, you will need a drill and any appropriate fastening hardware. For example, if you're mounting into drywall (rather than studs), you'll want to purchase drywall anchors with the appropriate screws. Please note screws are not included with the panel.

### Can I cut the panels?

Yes, absolutely. The panels are easy to cut using a handsaw or a circular saw. Simply measure twice and cut once!

### Can I hang a TV from the panels?

We don't recommend hanging a TV directly from the panels, instead cut out a gap for the TV mount and mount it to your wall as you regularly would. From there, you can install the panels around the mount before hanging your TV from the mount.

### How do I wash the panels?

The best way to wash the slats is with a well-wrung cloth or duster. If you ever want to clean the felt between the slats, simply use a vacuum.



**Guangzhou Mq Acoustic Materials Co., Ltd**



18022418653



[sales002@mq-acoustics.com](mailto:sales002@mq-acoustics.com)



[acousticpanelwalls.com](http://acousticpanelwalls.com)

KeZhu Business Building, ZhuJi Road, TianHe District, GuangZhou, China