

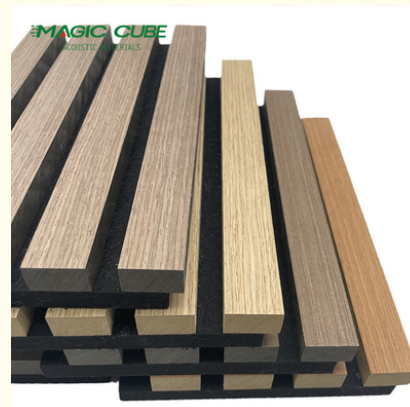


Eco-Friendly Wooden Slat Wall Acoustic Panel with Edge to Edge 13mm Sound Absorption

Our Product Introduction

Basic Information

- Place of Origin: GUA
- Brand Name: MQ
- Certification: CE
- Minimum Order Quantity: 100 pieces
- Price: \$21.99/pieces 100-499 pieces
- Packaging Details: Pallet and carton box
- Supply Ability: 5000 Piece/Pieces per Month

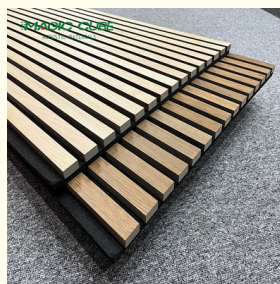


Product Specification

- Warranty: 1 Year
- After-sale Service: Online Technical Support, Other
- Project Solution Capability: 3D Model Design, Others
- Application: Apartment, Bedroom, living Room
- Design Style: Modern
- Product Name: Wood Slat Acoustic Panel
- Standard Size: 2400*600*21 Mm/ Customized
- Polyester Thickness: 9mm/12mm
- Finish: Melamine, Veneer, HPL, Coating
- Pattern: MDF 27mm, Edge To Edge 13mm / Customized
- Type: Sound Absorption Acoustic Panel
- MOQ: 50 Square Meter
- Weight: 26kg/pcs
- Highlight: **sound absorption wood slat panels,**



More Images

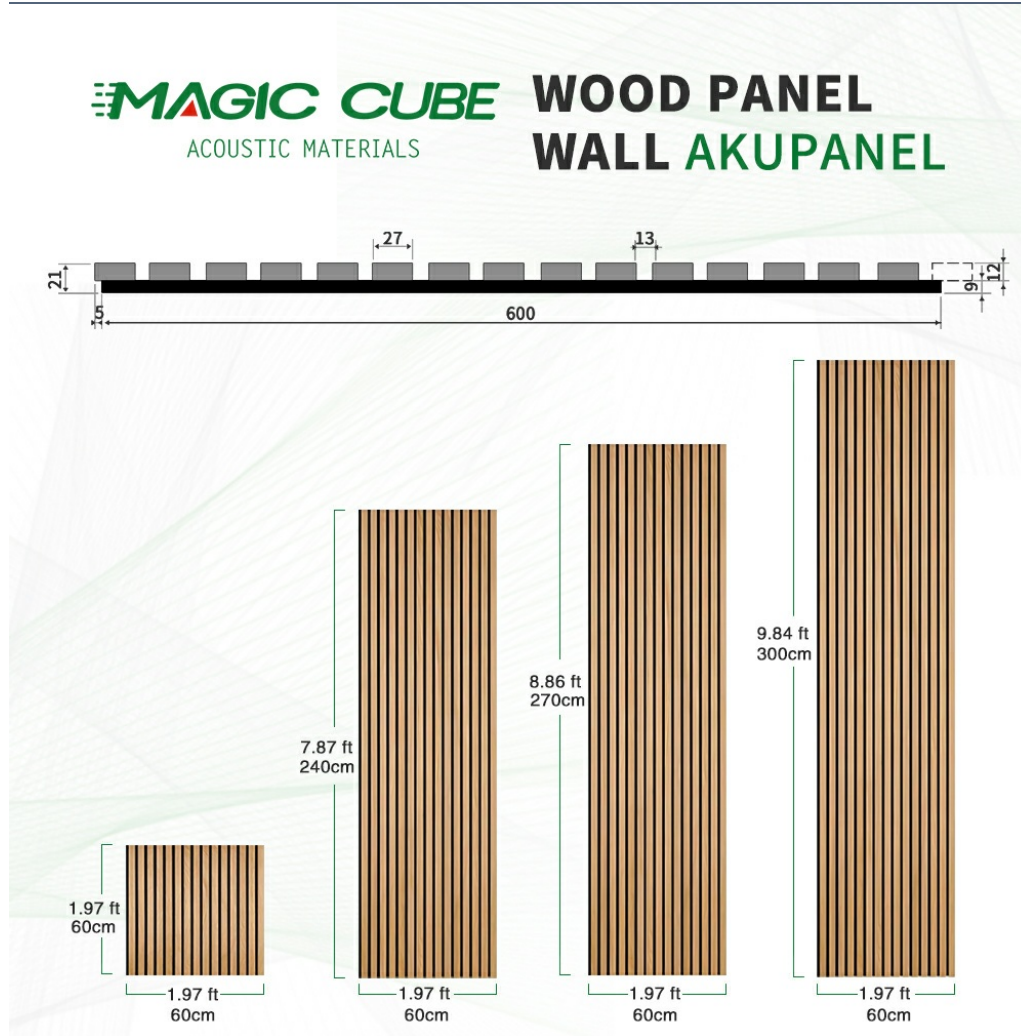


Products Description

MQ acoustic wooden slat wall panels range offers a luxury quality, state of the art, noise-reducing wood panelling solution. Each panel has been handcrafted not only to transform projects visually but also to create a more quiet, comfortable environment. The range features eight unique finishes, from clean, modern textures, through to warm rustic wood character. While each panel is created from only responsibly sourced.

The acoustic slat wood wall panel range is a beautifully designed wood strip decorative wall and ceiling panel which boasts high-quality acoustic properties. The panels can be easily applied to both walls and ceilings - modern styling personified in every way.

Details Images



HOT TREND AKUPANEL COLOR





Standard Size	2400/2700*600*21.5mm / customized
Finish	Melamine/Veneer/Painting
Material	MDF + Polyester Fiber
Pattern	MDF 27mm, Edge to edge 13mm/customized
Function	Sound absorption, Interior decoration
NRC	0.85~0.94, SGS Test for polyester panel

[Contact us to get the most favorable price and free samples!](#)

Our acoustic slat wood panels for walls and ceilings can quickly transform any modern space. Made from veneered lamella strips placed on an acoustic felt backing, these slatted wood wall panels are built to last.

The slat wall panel is easy to install yourself, instantly enhancing your bedroom, living room, or office into a refined, modern space.

Specifications

AKUPANEL SPECIFICATION

Beautiful wood panels with the added benefit of superior sound absorption.

Each panel is faced with real wood veneer, a metal, a custom stain/paint /print, or wrapped in a solid color/wood grain pattern to complete your design.

SURFACE VENEER

- natural wood finish
- Engineer wood finish
- Melamine finish

PET FELT PANEL

- black
- Grey

MDF PANEL

- E1 mdf
- EO mdf



Modern, aesthetic looking wooden panels



Moisture and mold safe



100% sustainable



No post-cutting painting required



Absorbs reverberation and echo



Cost efficient, no need for final finish for the walls

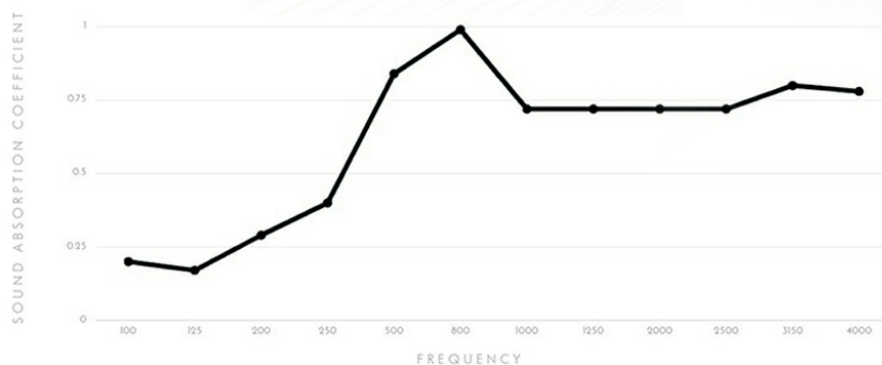


Its Faster, easier and Cheaper to install, than painting a wall



100% natural wooden materials

ACOUSTICS TEST



Frequency (Hz)	100	125	200	250	500	800	1000	1250	2000	2500	3150	4000
Sound Absorption Coefficient (a)	0.20	0.17	0.29	0.40	0.84	0.99	0.92	0.72	0.72	0.72	0.80	0.78

Installation

AKUPANEL INSTALLATION

For the siding installation, you have the following materials are required:



STEP 1

The wall should be wrung out without screws. If you want to place the siding on a wall without slats, depending on the wall (flatness), this is also possible. You can use high viscosity glue (black) to attach the wall board to the wall. To achieve the highest sound-absorbing rating, we recommend placing slats, followed by wool insulation and wallboard.

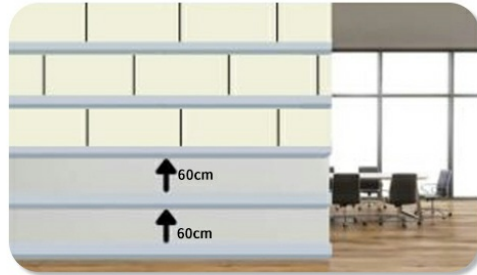
STEP 2

Make a frame out of wood. You are advised to install 60 cm long slats.



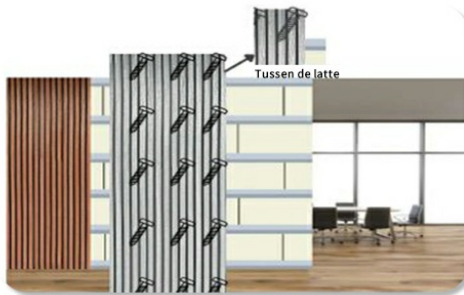
STEP 3

Then you need insulation wool, between 45 mm thick slats.



STEP 4

The wall panels are then screwed onto the slatted frame. For each wall panel, wii 15 recommends 3 screws per row.



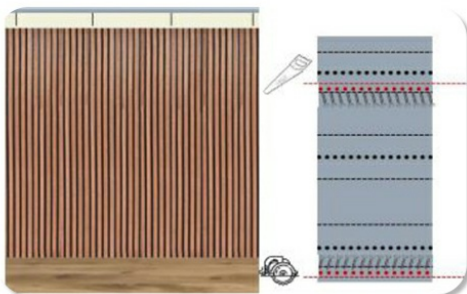
STEP 5

If one end of the wall is shorter than the width of the siding, we recommend using a board cutter to cut the siding along the slats to the width you need.



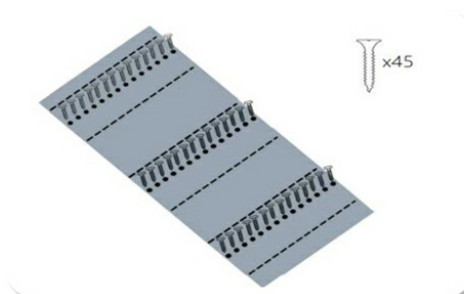
STEP 6

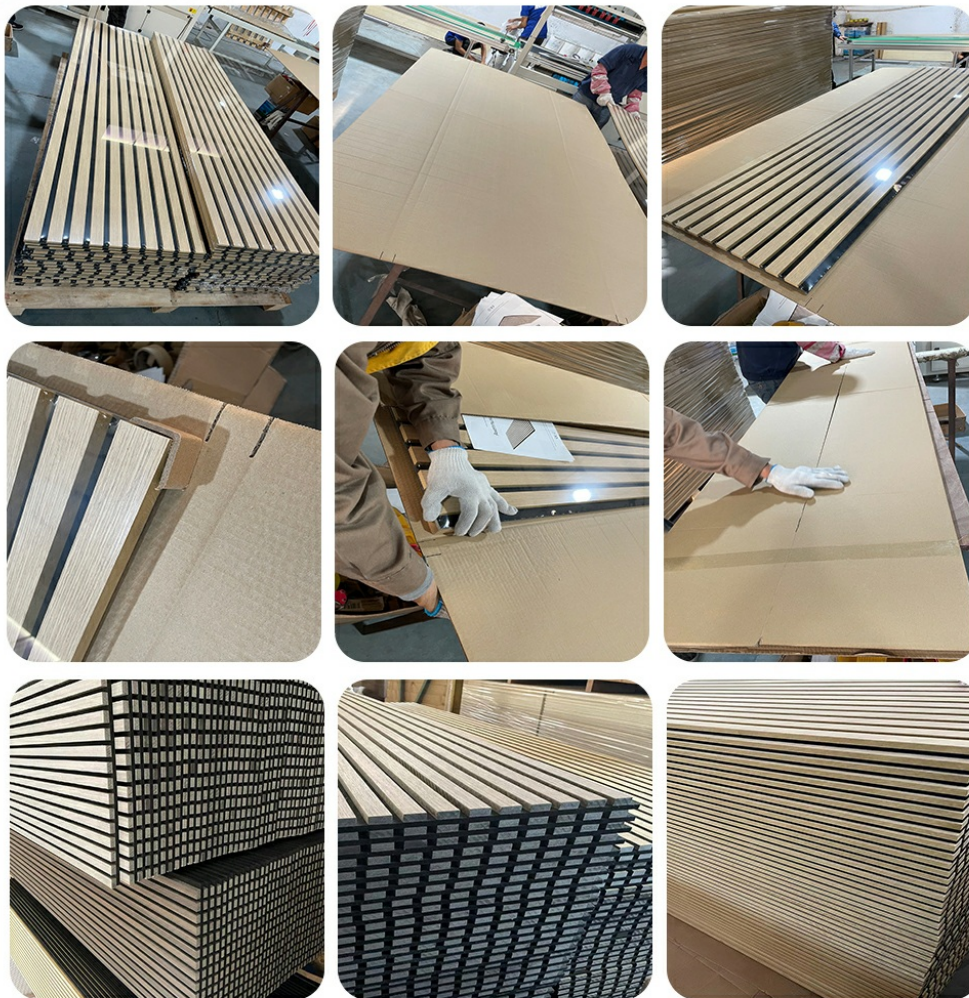
If your wall is higher than 270cm, you can attach wall panels. Please note the following tips! It is highly recommended to use a circular saw to shorten the edge of the siding by about 3mm so that the edge is absolutely flat. As a result, the seam will be minimal visible when placing wall panels. When you are sawing, you need to reinforce the area where you are sawing, and you can do this by adding screws or staples above or below the area where you are sawing slats.



STEP 7

To attach panels to the ceiling, the instructions are almost identical to those for attaching to the wall. See the tips below! Because we live on Earth, the law of gravity applies here. Before attaching the panels to the ceiling, it is highly recommended to screw or staple the slats to the felt, at least 3 rows, as shown below. This prevents the panel from sinking.





Company Profile

ABOUT US

OEM & ODM

10 years
of experience

4
production lines

1,000,000
Annual Production
Capacity

Why Choose To Join MQ

We are the most innovative manufacturer in the industry in China.

Our team of global professional engineers and consultants are highly qualified.

Our company specializes in the development of sound-absorbing panel products.

We have over 10 years of experience in the field of sound-absorbing panels.

We have 4 production lines and can deliver products within 7 days.

Our annual production capacity is 1,000,000 square meters

CERTIFICATION

MAGIC CUBE Acoustics has focused on the R&D, production and sales of various sound absorption and sound insulation products. Our products have passed CE, ISO9001 & SGS certificate. MAGIC CUBE has more than a dozen patented acoustic technology products, and more than 30 domestic and international test reports.



TEAM ACTIVITY



At MQ Acoustic, you can buy your natural acoustic panels at an affordable price. While quality is of great importance, price is also very important! We deliver directly from the manufacturer to the customer, which means we don't have to deal with intermediaries. We apply bulk prices to ensure that you can give your interior an eye-catching look at affordable prices.

FAQ

What do I need for installation?

For installation, you will need a drill and any appropriate fastening hardware. For example, if you're mounting into drywall (rather than studs), you'll want to purchase drywall anchors with the appropriate screws. Please note screws are not included with the panel.

Can I cut the panels?

Yes, absolutely. The panels are easy to cut using a handsaw or a circular saw. Simply measure twice and cut once!

Can I hang a TV from the panels?

We don't recommend hanging a TV directly from the panels, instead cut out a gap for the TV mount and mount it to your wall as you regularly would. From there, you can install the panels around the mount before hanging your TV from the mount.

How do I wash the panels?

The best way to wash the slats is with a well-wrung cloth or duster. If you ever want to clean the felt between the slats, simply use a vacuum.



Guangzhou Mq Acoustic Materials Co., Ltd



18022418653



sales002@mq-acoustics.com



acousticpanelwalls.com

KeZhu Business Building, Zhuji Road, TianHe District, GuangZhou, China