



Width 700mm Commercial Acoustic Sliding Partition Walls For Hotel Soundproofing

Our Product Introduction

Basic Information

- Place of Origin: Guangdong, China
- Brand Name: MQ Acoustics
- Model Number: Movable Partitions
- Minimum Order Quantity: 2 pieces
- Price: \$158.00/pieces >=2 pieces
- Packaging Details: Movable Wall Carton Paper Packaging.

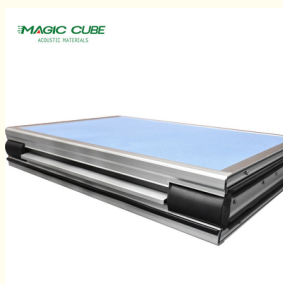


Product Specification

- General Use: Commercial Furniture
- Type: Office Furniture, Melamine MDF Panel, Fireproof PVC Board, Fabric(Le
- Mail Packing: N
- Application: Home Office, Hotel, Office Building, Mall, Workshop, Other, Hall, Gym, Office, Hotel Banquet Hall, Etc.
- Design Style: Modern
- Model NO.: Movable Partitions
- Surface: MDF Board, Fabric, Leather
- Density: 28~32kg/M2
- Dimensions: W700-1200mm, H2000-5200mm, Thickness 80-110mm
- Transport Package: Movable Wall Carton Paper Packaging.
- Trademark: MQ Acoustics
- HS Code: 76101000



More Images



Application



Products Description

Movable partition is a movable wall with general wall functions that can divide large space into small space or connect small space into large space at any time according to needs. It can play a role of multiple functions in one hall or one room.

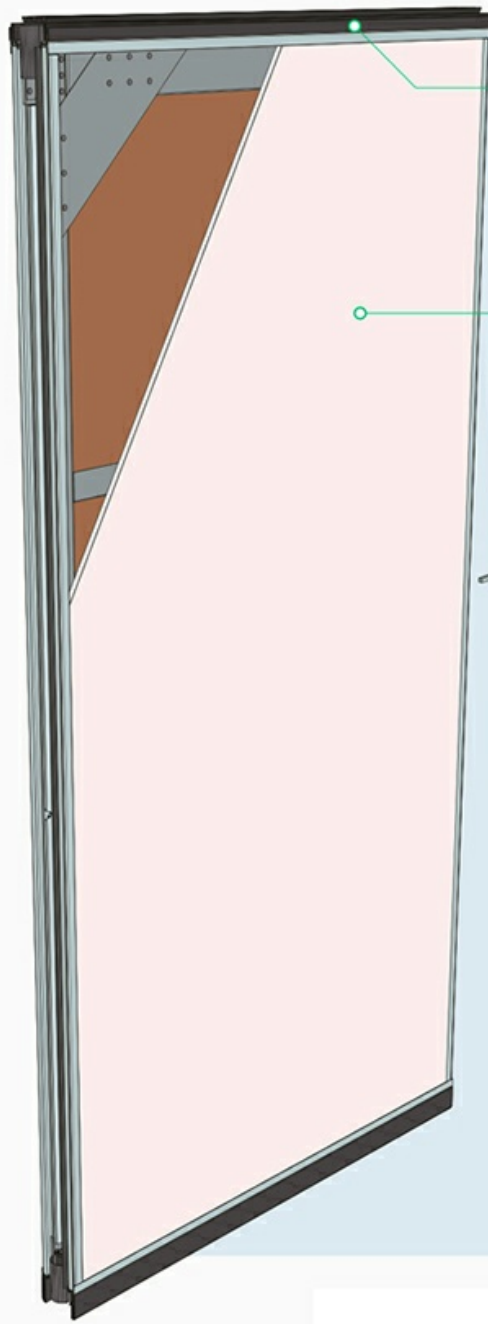
The acoustic movable walls brings great convenience to people's work. For example, you can fold it on one side when you need it, so that the two spaces are temporarily joined to make them appear larger, which is convenient for temporary departmental meetings.

Details Images

MAGIC CUBE
ACOUSTIC MATERIALS







①

Standard clearance top 25mm and bottom 38mm mechanical seals, together with the four-finger multiple contact sweep seals, keep out sound effectively.

②

Gypsum or galvanized steel faces as standard face finishes. Single seamless panel with a maximum height of 13m. Panels can be lengthened up to 18.3m through splicing.

③

Waist-high seal activator for easy operation.

④

"Quick set" top and bottom mechanical seals provide the most reliable and fastest operation.

⑤

Acoustics performance achieves STC 54 on ASTM Complete Operable System Test Report.

⑥

Patented overall design and features, with accredited international certifications for rigorous acoustics and seismic performance standards.

PRODUCT FEATURES

Steel Frame

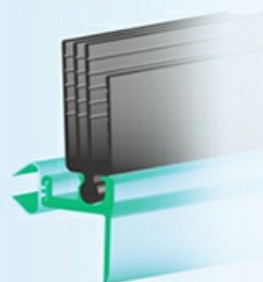
The frame is made of 2mm welded heavy-duty galvanized steel. It provides the frame with high rigidity & durability.

Free 5-year warranty on welded steel frame



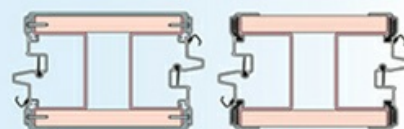
New Sweep Seals

Four-finger sweep seals are installed at panel's top and bottom, which increase the contact point by 50%, when comparing to the past product series. It provides optimum seal contact to keep out sound effectively.



Improved Trim System

Trimmed and trimless designs provide options for reinforced and replaceable face panels, catering different design proposals.

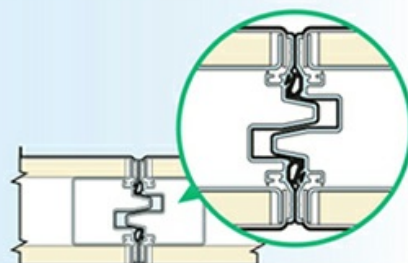


Reinforced face panel

Replaceable face panel

Newly Invented Bullnose

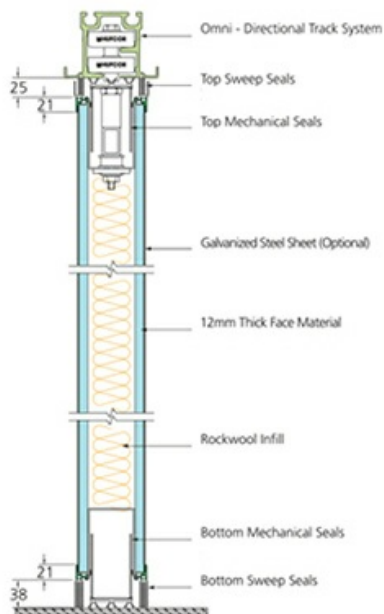
The single design bullnose replaces the traditional male and female-sided bullnose. Equipped with vertical compressive seals, it improves the depth of interlocking, and prevents sound leaks effectively.



PRODUCT SPECIFICATION

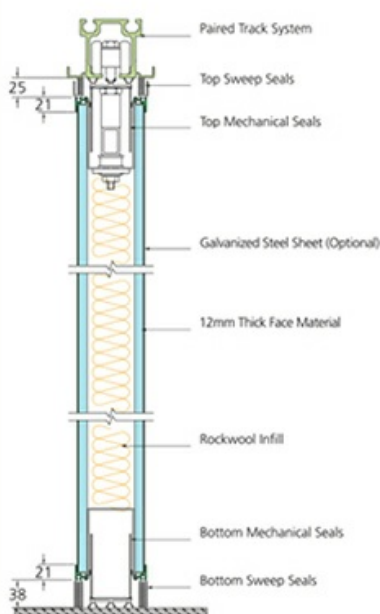
Omni-Directional Panels

Vertical Section



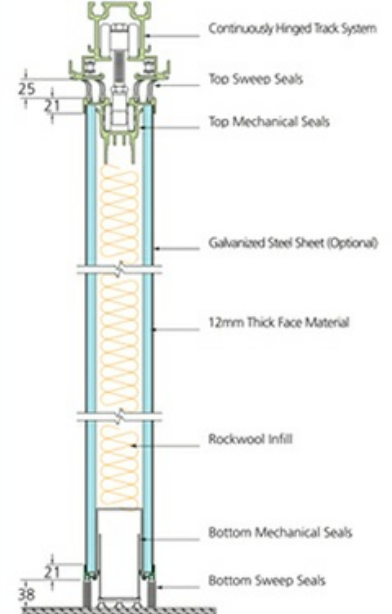
Paired Panels

Vertical Section

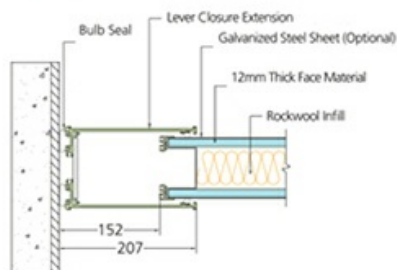


Continuously Hinged Panels

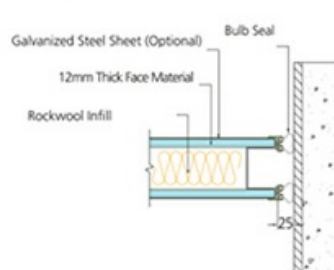
Vertical Section



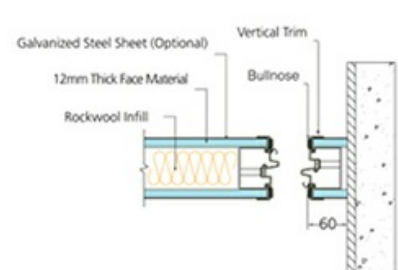
Lever Closure



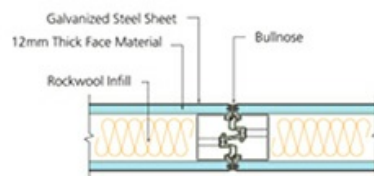
Bulb Seal



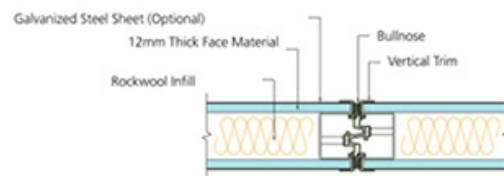
Wall Jamb



Typical Panel Joint (Without Vertical Trim)



Typical Panel Joint (With Vertical Trim)

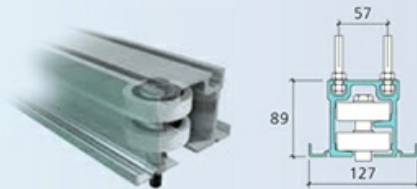


Aluminum Track Systems

Omni-Directional Panels

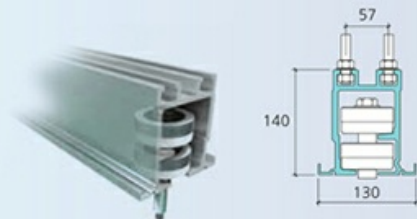
Dual wheel trolleys that negotiate 90° turns, through X, L, and T intersections. Two carriers are provided per panel. Each carrier has two horizontal counter-rotating wheels that roll (not slide) in the track. Each wheel has precision-ground bearings, encased with Delrin™ for quiet operation. Carriers easily negotiate square or angled corners without switches.

TYPE 36



Weights up to 1000lbs (455kg) per panel

TYPE 57



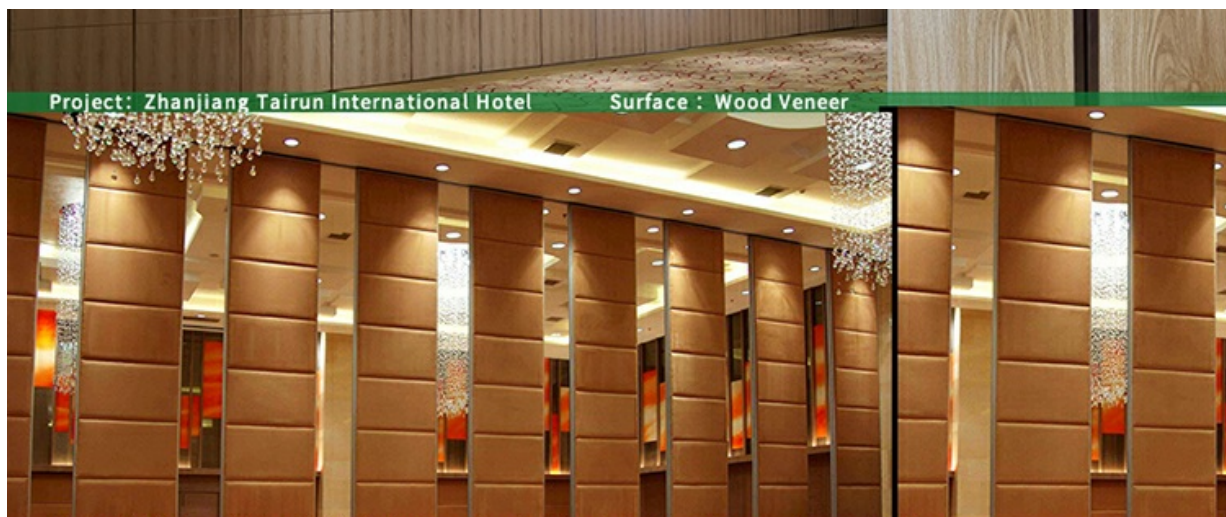
Weights up to 1500lbs (680kg) per panel



CUSTOMER PHOTOS



Project: Shantou HaoYouLai Hotel (guangdong) Surface : Leather Wrapped+ Wood Veneer



Project: Zhanjiang Tairun International Hotel

Surface : Wood Veneer



Project: LiJiang Waterfall Hotel(guangxi)

Surface : Leather Wrapped Acoustic Panel



Project: Fucity Palace Hotel(guangxi)

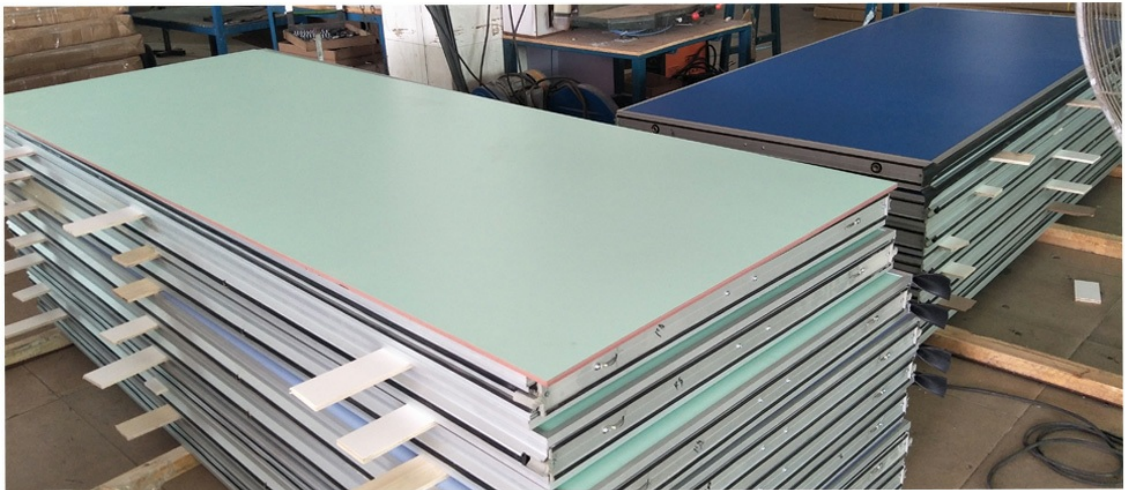
Surface : Leather Wrapped

About Us

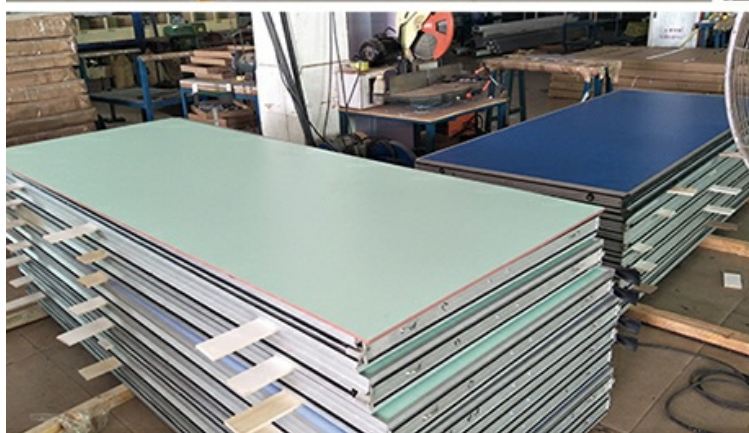


Magic Cube (MQ) Acoustics is a professional acoustic solution provider, integrating acoustic material manufacturing, architectural acoustical environment construction and industrial noise control. We are committed to the combination of Acoustics & Aesthetic, to offering our clients the best acoustic solution with high quality acoustic material.

In order to meet the higher needs of customers, we has introduced advanced production equipment which has fully guaranteed product quality and technology. After 5 years of rapid development, we has an annual output of more than 500,000 square meters of



COMPANY INTRODUCTION



PACKING



♥ How to Contact Us ♥ Send Your Inquiry Details in the Below, for Free Sample, Click “Send” Now!

FAQ

1. Can I get free samples and how long does it take to produce samples?

If the samples you need are in our stock, they will be provided to you free of charge. Customized samples usually take about a week to produce.

2. Do you accept OEM or ODM order?

Yes, as a manufacturer, we can produce acoustic materials based on your samples or drawings. Please do not hesitate to contact us.

3. How to get an accurate quotation?

Can provide us with detailed product information, such as pattern, core material, surface, etc. If you have CAD or other drawings,

don't hesitate to send it to us.

4. Payment terms

T/T 30% deposit before production, 70% balanced payment before delivery.

For more information, please feel free to contact us.



18022418653



sales002@mq-acoustics.com



acousticpanelwalls.com

KeZhu Business Building, ZhuJi Road, TianHe District, GuangZhou, China