



## Hotel Room Soundproof Movable Partition Wall 1200mm Width Easy To Operate

### Our Product Introduction

#### Basic Information

- Place of Origin: Guangdong, China
- Brand Name: MQ Acoustics
- Model Number: Movable Partitions
- Minimum Order Quantity: 100 square meters
- Price: \$89.99/square meters >=100 square meters
- Packaging Details: Movable Wall Carton Paper Packaging.
- Supply Ability: 5000 Square Meter/Square Meters per Month

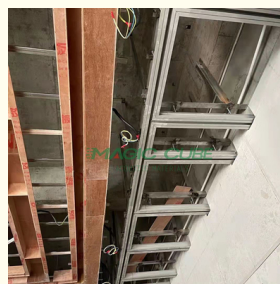
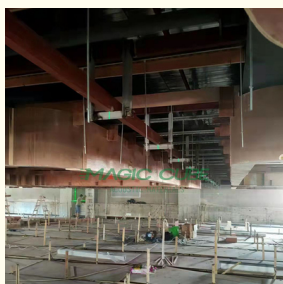


#### Product Specification

- General Use: Commercial Furniture
- Type: Office Furniture, Melamine MDF Panel, Fireproof PVC Board, Fabric(Le
- Mail Packing: N
- Application: Home Office, Hotel, Office Building, Mall, Workshop, Other, Hall, Gym, Office, Hotel Banquet Hall, Etc.
- Design Style: Modern
- Model NO.: Movable Partitions
- Surface: MDF Board, Fabric, Leather
- Density: 28~32kg/M2
- Dimensions: W700-1200mm, H2000-5200mm, Thickness 80-110mm
- Transport Package: Movable Wall Carton Paper Packaging.
- Trademark: MQ Acoustics
- HS Code: 76101000



#### More Images

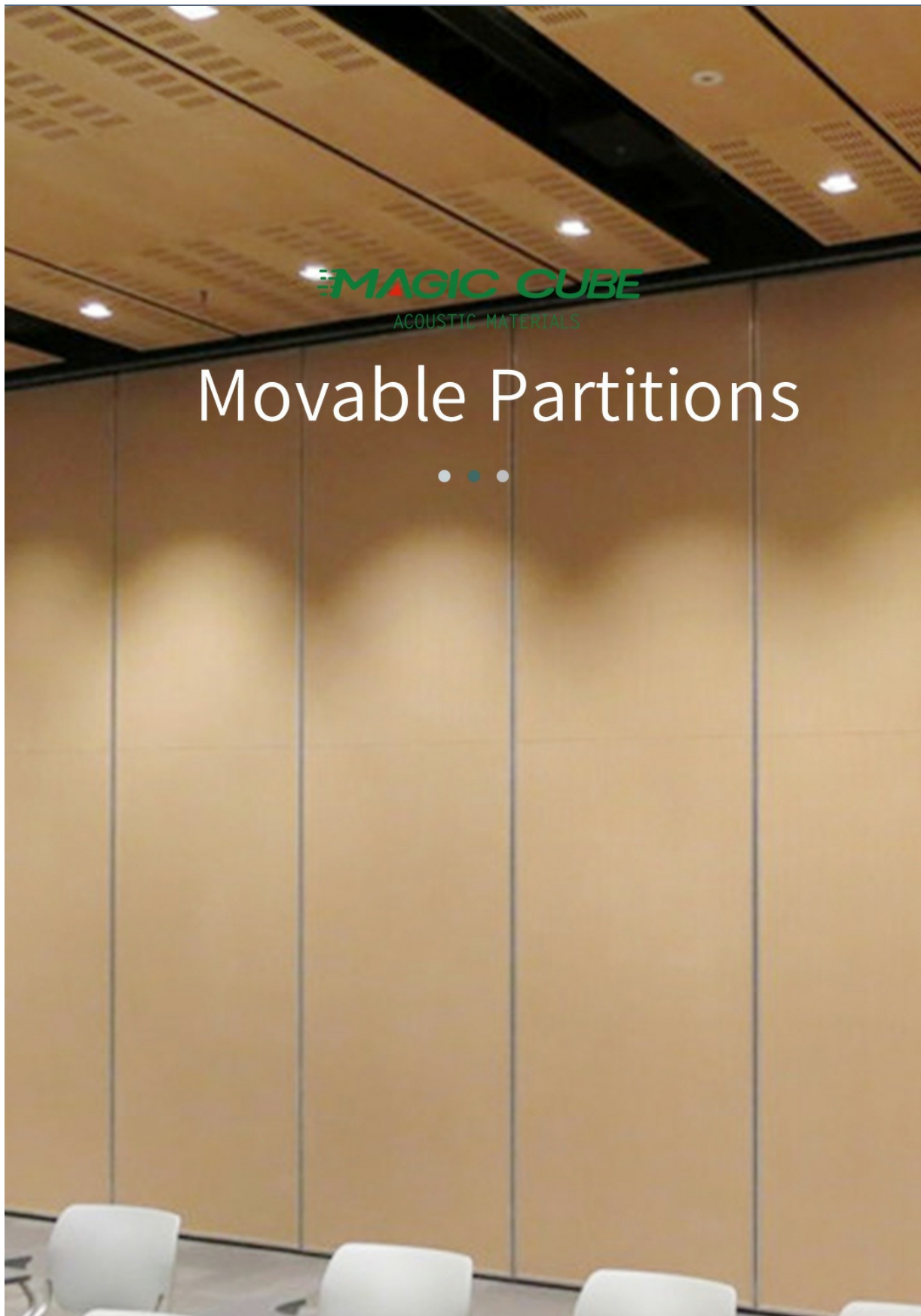


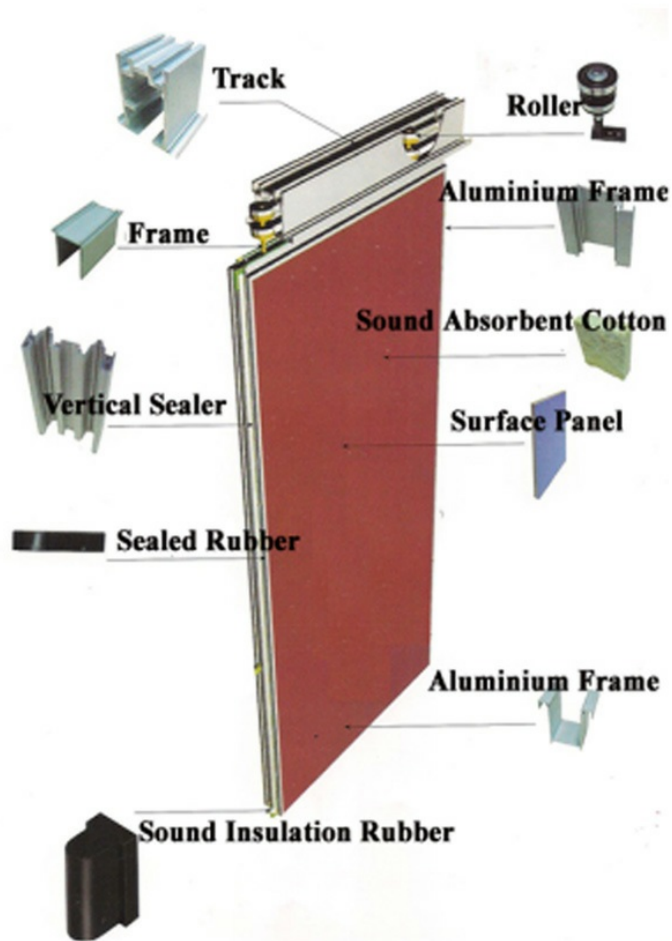
## Product Description

### Products Description

Movable partition is a movable wall with general wall functions that can divide large space into small space or connect small space into large space at any time according to needs. It can play a role of multiple functions in one hall or one room. The acoustic movable walls brings great convenience to people's work. For example, you can fold it on one side when you need it, so that the two spaces are temporarily joined to make them appear larger, which is convenient for temporary departmental meetings.

### Details Images







# Product Features

- 1/ No ground rail suspension**  
there is no track on the floor, only need to install the track on the ceiling.



- 2/ Sound insulation and environmental protection**  
good sound insulation performance, the maximum sound insulation coefficient can reach 53dB.



- 3/ High-efficiency fire protection**  
It is made of high-efficiency fire-retardant materials with good fire-proof performance.



- 4/ Convenient storage**  
when collecting the partition, it can be hidden in the special storage cabinet, which does not affect the overall appearance.



## PRODUCT FEATURES

### Steel Frame

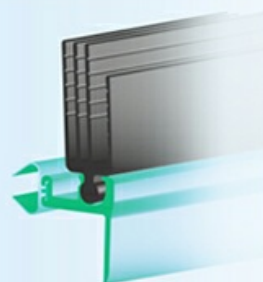
The frame is made of 2mm welded heavy-duty galvanized steel. It provides the frame with high rigidity & durability.

**Free 5-year warranty on welded steel frame**



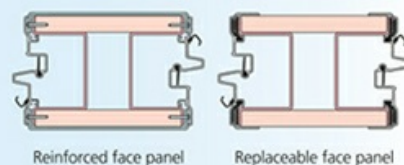
### New Sweep Seals

Four-finger sweep seals are installed at panel's top and bottom, which increase the contact point by 50%, when comparing to the past product series. It provides optimum seal contact to keep out sound effectively.



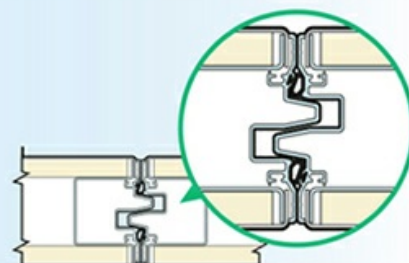
### Improved Trim System

Trimmed and trimless designs provide options for reinforced and replaceable face panels, catering different design proposals.



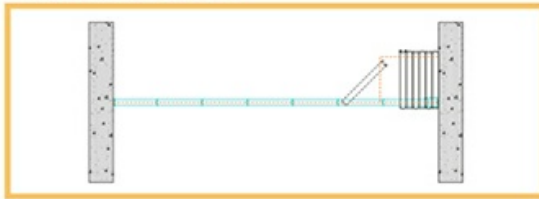
### Newly Invented Bullnose

The single design bullnose replaces the traditional male and female-sided bullnose. Equipped with vertical compressive seals, it improves the depth of interlocking, and prevents sound leaks effectively.



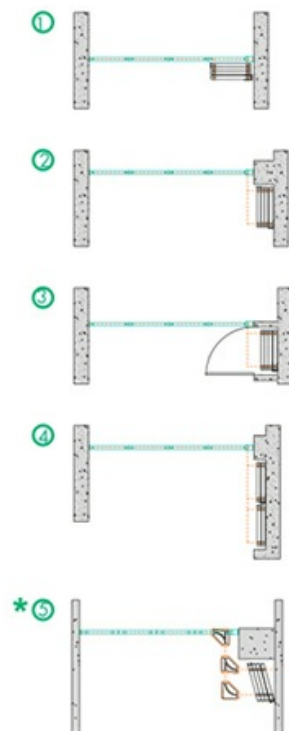
# OPERABLE PARTITIONS TYPES

## Omni-Directional Panels



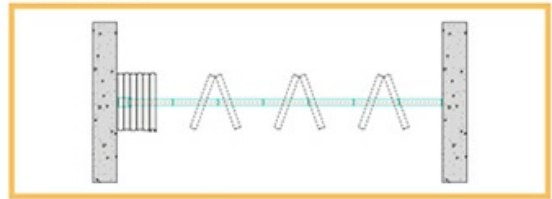
Omni-directional panels provide the ultimate flexibility to your operations because each individual panel can easily turn around corners and move to alternate locations or remote storage. Therefore, many different storage layouts can be created to fit your floor design and layout.

### Storage Layout Options



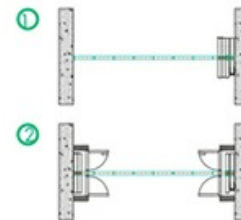
\* Type 11 steel track only

## Paired Panels

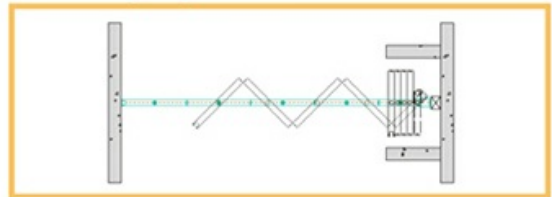


When remote storage is not required, the center-hung panels hinged in groups of two or three, are the ideal solution for quicker and easier set up, than omni-direction panels. Optional hinging is available to accommodate moldings or other decorations. Acoustical ratings are the same as omni-direction Panels.

### Storage Layout Options



## Continuously Hinged Panels

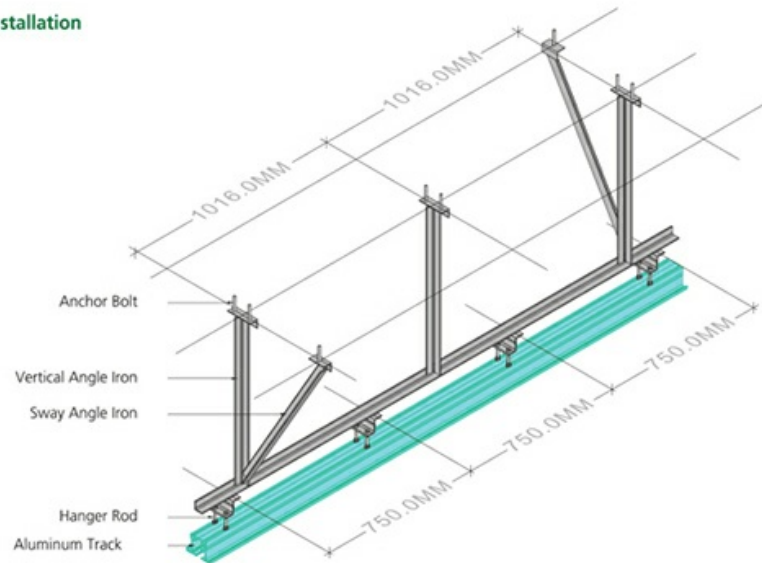


Continuously hinged panels are hinged together and move from wall to wall in a straight line. Electrically operated for fast, easy set-up.

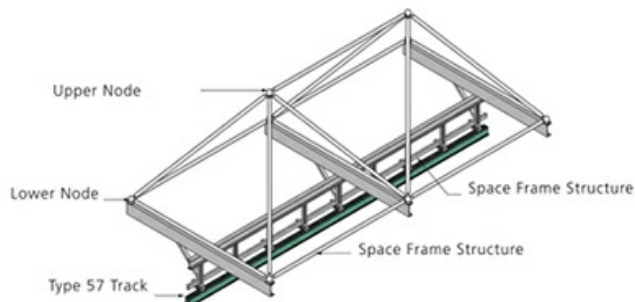
# TRACK SYSTEM

A high quality track system ensures that partitions will operate smoothly for years to come and assist in the quick set-up and storage of panels. All tracks have been rigorously tested for a minimum of 100 miles (approx 14 years) of usage cycle time. Job requirements vary, which is why we offer a wide selection of tracks to meet your operating requirements.

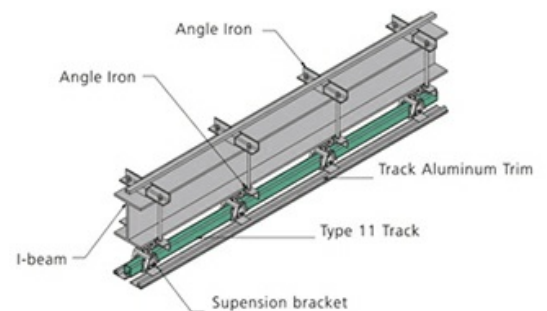
## Aluminum Track Installation



## Space Frame Installation



## Steel Track Installation



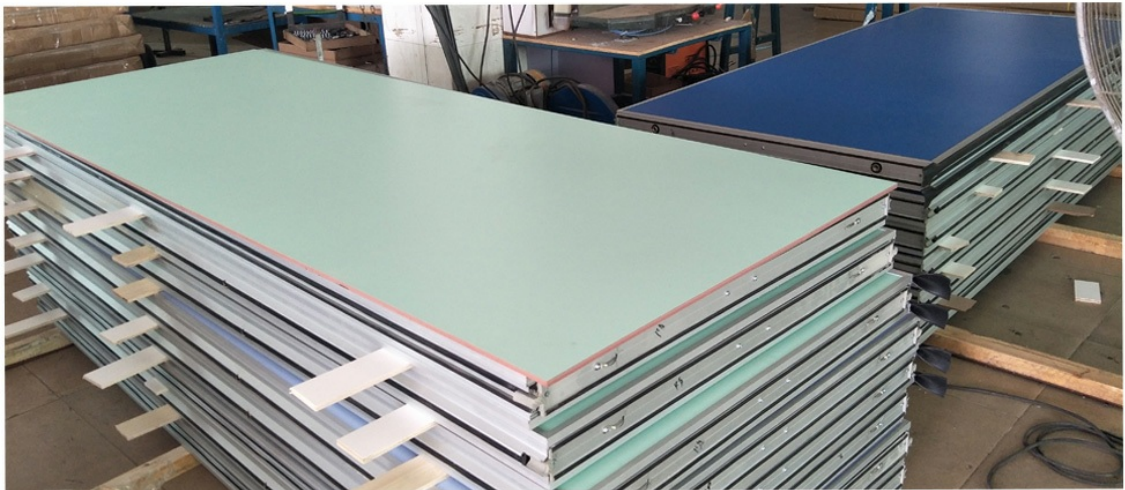


# About Us



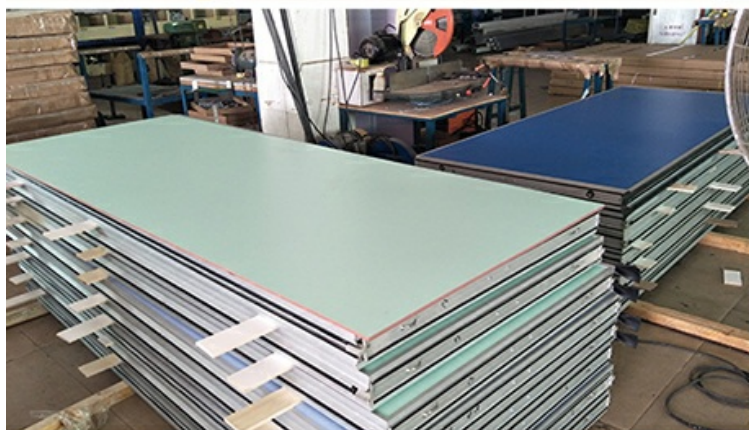
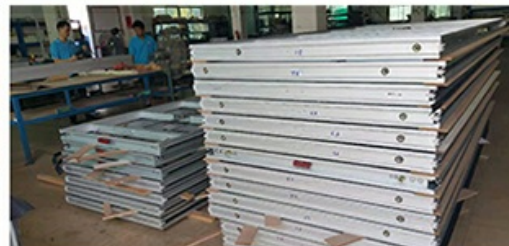
Magic Cube (MQ) Acoustics is a professional acoustic solution provider, integrating acoustic material manufacturing, architectural acoustical environment construction and industrial noise control. We are committed to the combination of Acoustics & Aesthetic, to offering our clients the best acoustic solution with high quality acoustic material.

In order to meet the higher needs of customers, we has introduced advanced production equipment which has fully guaranteed product quality and technology. After 5 years of rapid development, we has an annual output of more than 500,000 square meters of





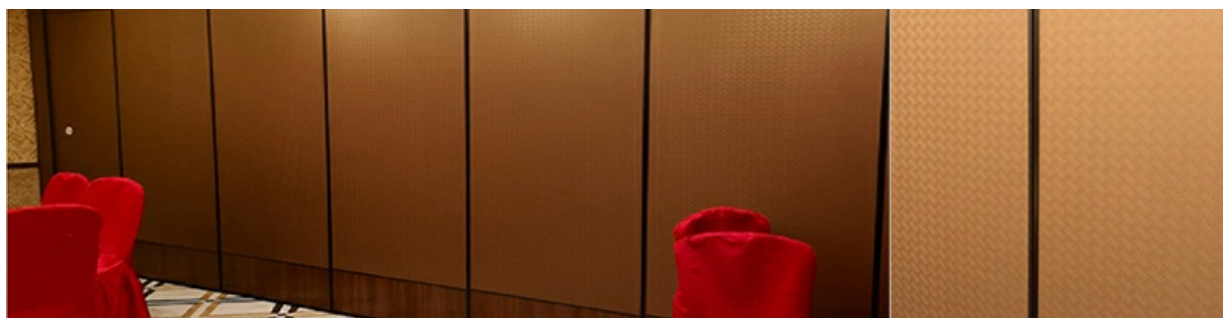
## COMPANY INTRODUCTION



## CUSTOMER PHOTOS







Project: Shantou HaoYouLai Hotel (guangdong) Surface : Leather Wrapped+ Wood Veneer



Project: Zhanjiang Tairun International Hotel Surface : Wood Veneer



Project: LIJiang Waterfall Hotel(guangxi) Surface : Leather Wrapped Acoustic Panel



Project: Fucity Palace Hotel(guangxi) Surface : Leather Wrapped





## PACKING



## FAQ

### 1. Can I get free samples and how long does it take to produce samples?

If the samples you need are in our stock, they will be provided to you free of charge. Customized samples usually take about a week to produce.

### 2. Do you accept OEM or ODM order?

Yes, as a manufacturer, we can produce acoustic materials based on your samples or drawings. Please do not hesitate to contact us.

### 3. How to get an accurate quotation?

Can provide us with detailed product information, such as pattern, core material, surface, etc. If you have CAD or other drawings,

don't hesitate to send it to us.

### 4. Payment terms

T/T 30% deposit before production, 70% balanced payment before delivery.

For more information, please feel free to contact us.



**Guangzhou Mq Acoustic Materials Co., Ltd**



18022418653



sales002@mq-acoustics.com



acousticpanelwalls.com

KeZhu Business Building, Zhuji Road, TianHe District, GuangZhou, China