



## Upgrade Your Meeting Room Design with 28-4 Pattern Melamine Finish Timber Slat Panels

### Our Product Introduction

#### Basic Information

- Place of Origin: China
- Brand Name: MQ Acoustics
- Model Number: grooved acoustic panel
- Minimum Order Quantity: 100 square meters
- Price: \$7.99 - \$19.99/square meters
- Packaging Details: Carton Box, Pallet
- Supply Ability: 5000 Square Meter/Square Meters per Month



#### Product Specification

- Warranty: 5 Years
- After-sale Service: Online Technical Support, Return And Replacement, Other
- Project Solution Capability: Total Solution For Projects, Others
- Application: Villa
- Design Style: Contemporary
- Model NO.: Grooved Acoustic Panel
- Edge: Tongue And Groove
- Color: Customized
- Core Material: Normal MDF, E1 MDF, Fr MDF, MGO, Solid Wood
- Pattern: 60-4, 28-4, 14-2, 13-3, 6-2 Or Customized
- Installation Accessories: Keel And Clips
- Keel And Clips: Carton Box, Pallet
- Trademark: MQ Acoustics
- HQ Address: 4444444444

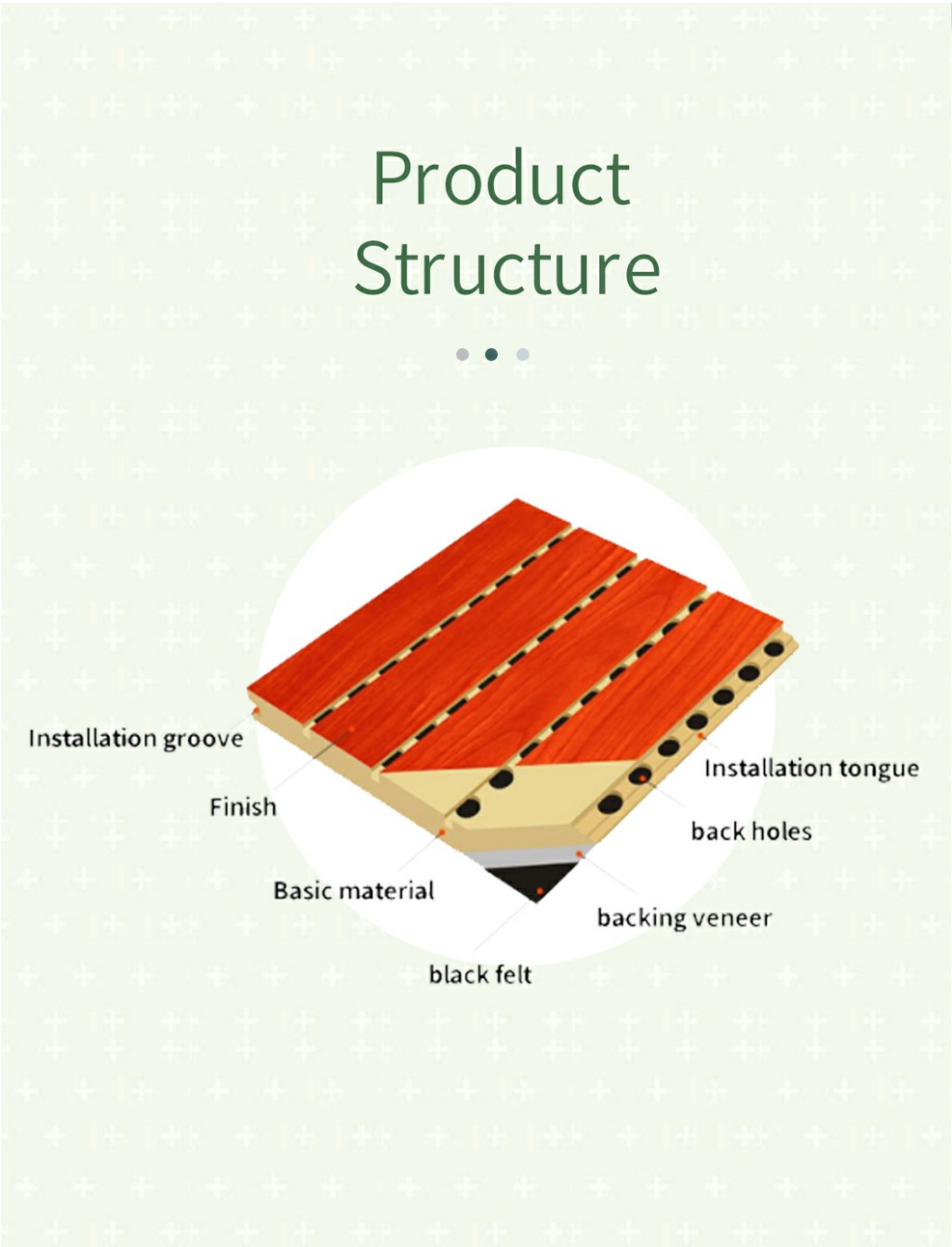


#### More Images



Products Description

**Wooden grooved acoustic panel** is one kind of sound-absorbing panels with grooves on the surface and holes on the back. The panel is used for sound absorption and acoustic arrangement. It solves sound problems such as echo. Wooden grooved acoustic panel provides the acoustic arrangement and allows the sound quality to be maximized. The edge of the wooden grooved acoustic panel with groove and tongue can be easily installed with clips or stapling to the wood battens.



Specifications

Basic Material	E1 MDF, FR MDF, Black MDF
Front Finish	Melamine, Veneer, Paint, HPL
Back Finish	Black Felt
Size	2440x132mm, 2440x197mm
Thickness	12/15/18 mm
Formaldehyde Emission	Can meet both China&EU Standard Class E1
Flame Retardant	Can meet China Standard Class B, BS476 Part 7 Class1, EN13501 Class B etc.

# Surface and Colors



- ① Melamine/ HPL: Pure colors and wooden grain are both available.
- ② Veneer: Normally the veneer is divided into natural veneer and technical veneer and the varnish can be UV or PU painting.
- ③ Paint: Colors can be customized according to Pantone or RAL color number. But there will be slight color difference in each batch.

## COLORS

Pure Colors



Wood Grain



The above is a part of the colors. Please send enquiries for more colors available.

# Product Details

We focus on detail improvement



## High Density Base Material

Special selection of high quality MDF panel. The wood fiber is uniform and meticulous makes the panel durable with high strength.

## Smooth Surface

The self-improved veneer laminating technology makes the veneer and the substrate better laminating, the surface is smooth and beautiful, not easy to crack and deformation, and the service life is long



## Black Acoustic Felt

High quality black acoustic felt on the back side of the panel makes the acoustic performance better and prevent the padding coming out from the panel.

## Precise Cutting Process

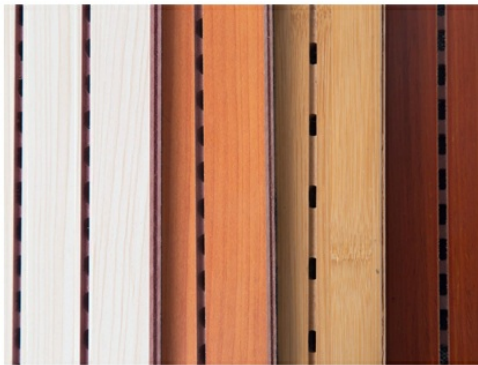
The surface and the edge of the panel is clean by standardized prouduction. The tongue and groove is accurated when installtion.



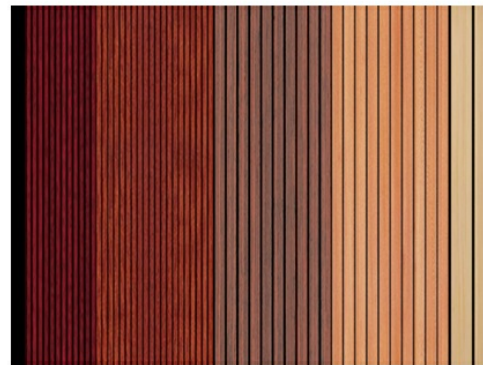


# Product Features

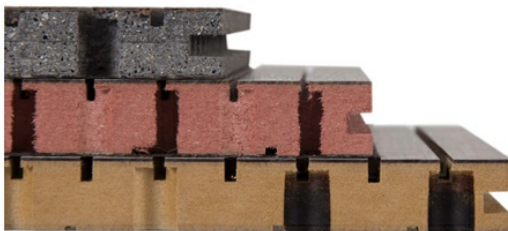
## 1/ Variety Of Finishes



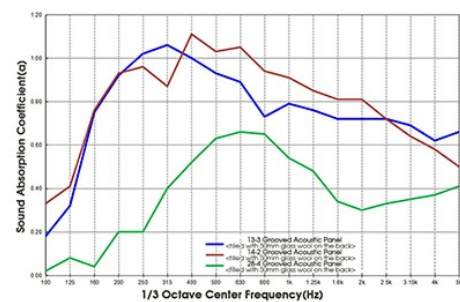
## 2/ Aesthetic Appearance



## 3/ Eco-friendly&Fire Resistant



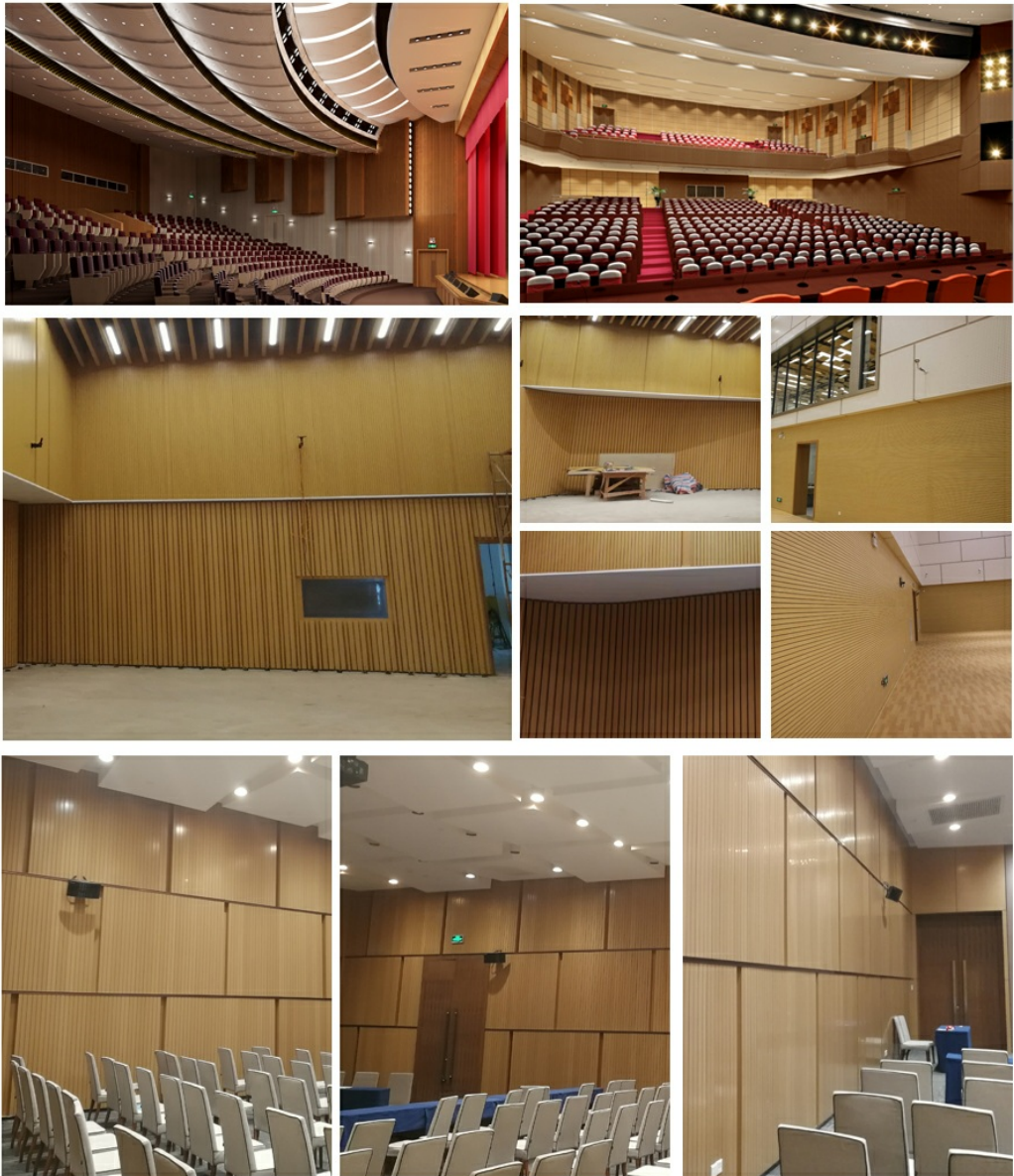
## 4/ Sound Absorption And Noise Reduction



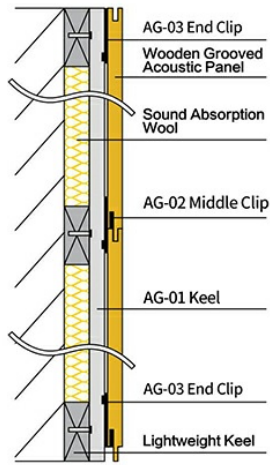
# Applications



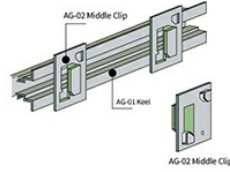
- ① Professional recording space: recording studios, broadcast studios, rehearsal rooms, etc.
- ② Large-scale music space: theaters, concert halls, KTV rooms, etc.
- ③ Office space: office buildings, meeting rooms, hotels, etc.



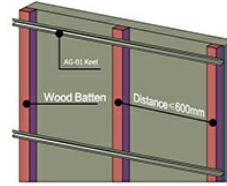
# Installation Guidance



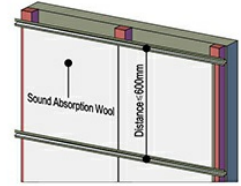
Cross-Section Structure



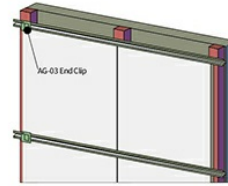
1. INSTALLATION ACCESSORIES



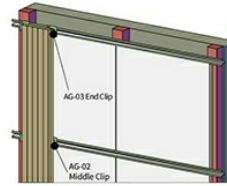
2. FIX AG-01 KEEL ON WOODEN BATTENS



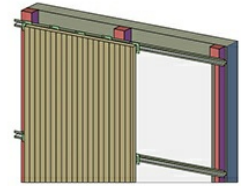
3. USE SOUND ABSORPTION WOOL AS PADDING



4. FIX AG-02 AND AG-03 CLIPS IN A LINE

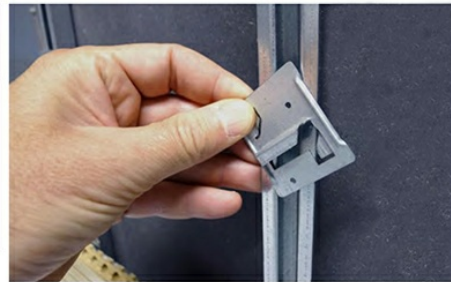
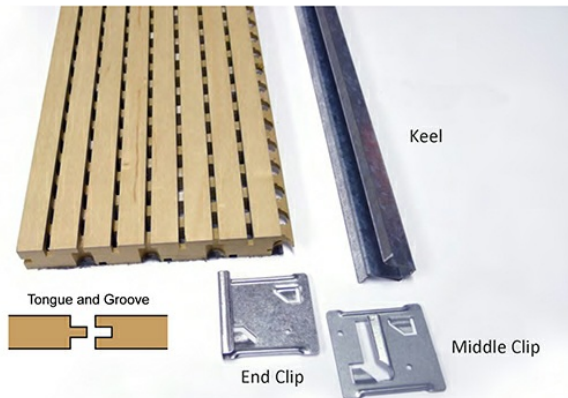


5. START TO INSTALL PANELS



6. INSTALL ANOTHER LINE OF PANELS

INSTALLATION: LIGHTWEIGHT STEEL KEEL SYSTEM



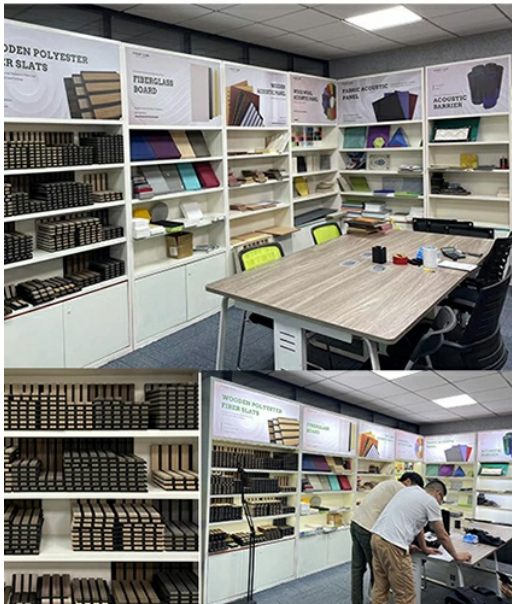


# ABOUT US

Magic Cube(MQ)Acoustics is a professional acoustic solution provider,integrating acoustic material manufacturing,architectural acoustical environment construction and industrial noise control.We are committed to the combination of Acoustics&Aesthetic,to offering our clients the best acoustic solution with high quality acoustic material.



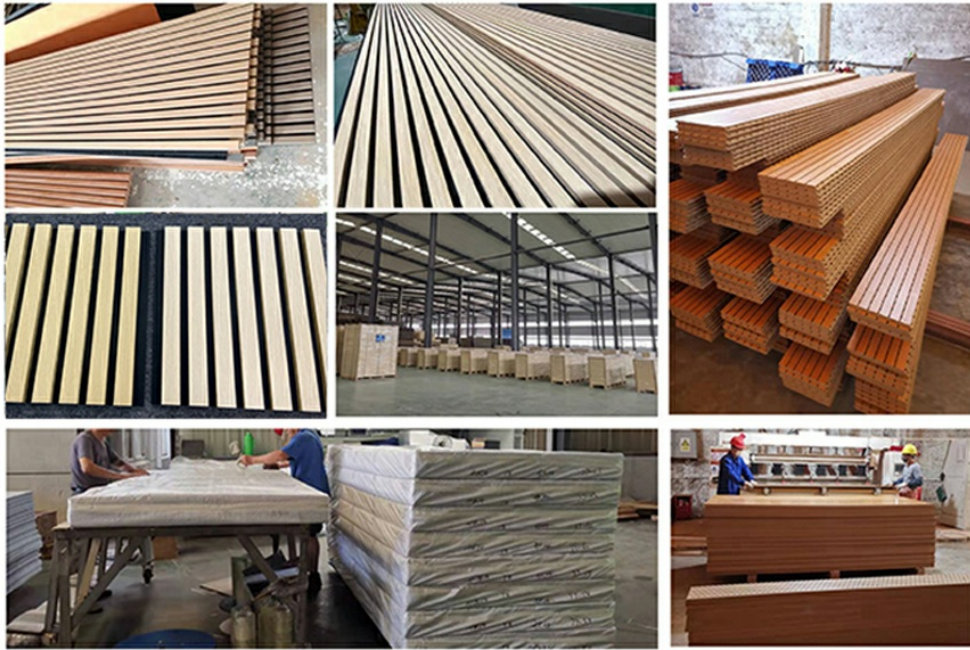
The exhibition hall



In order to meet the higher needs of customers, we has introduced advanced production equipment which has fully guaranteed product quality and technology. After 5 years of rapid development, we has an annual output of more than 500,000 square meters of various acoustic materials.



# OUR FACTORY



## OUR FACTORY



## OUR FACTORY



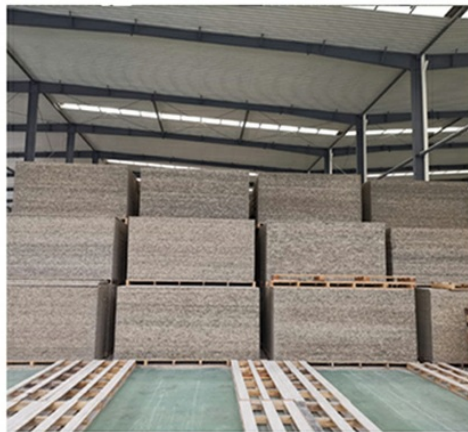
Cutting process



Slotting process



## OUR FACTORY





## TEAM ACTIVITY



## EXHIBITION





# CERTIFICATION

MAGIC CUBE Acoustics has focused on the R&D, production and sales of various sound absorption and sound insulation products. Our products have passed CE, ISO9001 & SGS certificate. MAGIC CUBE has more than a dozen patented acoustic technology products, and more than 30 domestic and international test reports.



## FAQ

### 1. Can I get free samples and how long does it take to produce samples?

If the samples you need are in our stock, they will be provided to you free of charge. Customized samples usually take about a week to produce.

### 2. Do you accept OEM or ODM order?

Yes, as a manufacturer, we can produce acoustic materials based on your samples or drawings. Please do not hesitate to contact us.

### 3. How to get an accurate quotation?

Can provide us with detailed product information, such as pattern, core material, surface, etc. If you have CAD or other drawings, don't hesitate to send it to us.

### 4. Payment terms

T/T 30% deposit before production, 70% balanced payment before delivery.

For more information, please feel free to contact us.



**Guangzhou Mq Acoustic Materials Co., Ltd**



18022418653



sales002@mq-acoustics.com



acousticpanelwalls.com

KeZhu Business Building, Zhuji Road, TianHe District, GuangZhou, China