



## Edge to Edge 13mm Pattern Slat Wall for Sound Absorption Eco-Friendly Natural Oak Panel

### Our Product Introduction

#### Basic Information

- Place of Origin: GUA
- Brand Name: MQ
- Certification: CE
- Model Number: MQ-7680
- Minimum Order Quantity: 100 square meters
- Price: \$28.90/square meters 100-199 square meters
- Packaging Details: Pallet
- Supply Ability: 5000 Square Meter/Square Meters per Month

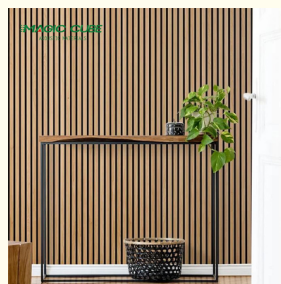
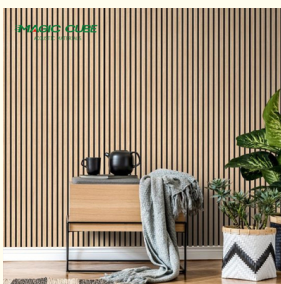


#### Product Specification

- Warranty: 1 Year
- After-sale Service: Online Technical Support
- Project Solution Capability: Graphic Design, 3D Model Design, Total Solution For Projects
- Application: Apartment, Bedroom, living Room
- Design Style: Modern
- Product Name: Wood Slat Acoustic Panel
- Standard Size: 2400\*600\*21 Mm/ Customized
- Polyester Thickness: 9mm/12mm
- Finish: Melamine, Veneer, HPL, Coating
- Pattern: MDF 27mm, Edge To Edge 13mm / Customized
- Type: Sound Absorption Acoustic Panel
- MOQ: 50 Square Meter
- Weight: 26kg/pcs



#### More Images



# Wooden Slat Acoustics Panel

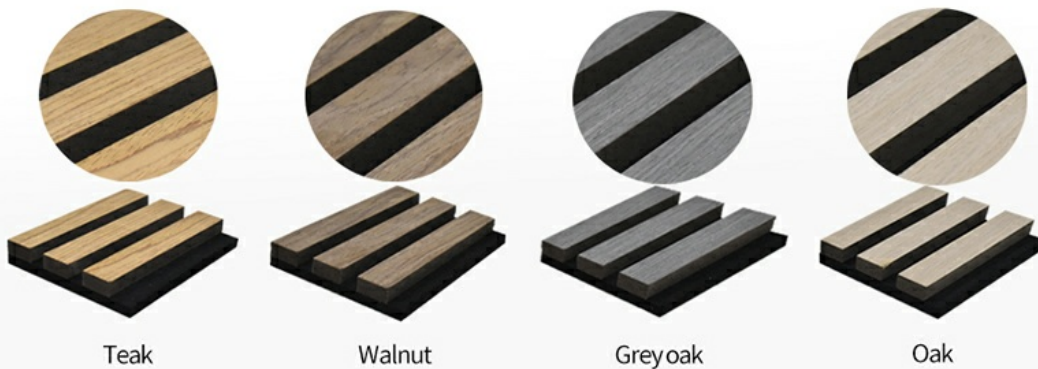
Make a beautiful, modern look and remove reverberation



# Size And Color

we have more other customized size and color

[Welcome to consult and customize](#)



## Free Sample Pack

Not 100% sure? Our fully-refundable samples allow to you see and feel our panels before you buy.

[CONTACT US >](#)







**Something From Nothing** 100% ♻️  
Our acoustical felt backing is made from 100% recycled materials.

**Making Modern Style** ||||  
Combine classic design with the modernity of clean lines and minimalism.

**Acoustic Design** ||||  
when the sound waves hit the panels the waves are absorbed in the felt and it eliminated the reverberation.

<b>Item</b>	MQ Wooden Slat Acoustic Panel	<b>Material</b>	MDF + Polyester Fiber
<b>Standard Size</b>	2700/2400*600*21.5mm / customized	<b>Finish</b>	Melamine/Veneer/Painting
<b>Features</b>	Eco protection, Sound absorption, Fire-retardant	<b>Function</b>	Sound absorption, Interior decoration
<b>Pattern</b>	MDF 27mm, Edge to edge 13mm/customized	<b>NRC</b>	.85~0.94, SGS Test for polyester panel

## Introduction of Materials

**Polyester board - substrate - veneer**

### Acoustical felt

The felt is made from recycle plastic (bottles)  
The felt absorbs the sound waves and dampens the sound.

### Surface

Wood from sustainable forestry  
All the wood we use comes from sustainable forestry, which ensures that the forest can reproduce more trees than what is being cut.

### Slats

The core of the acoustics panel consists of a medium density fibreboard and is available in black or a natural colour. The slats create diffusion, which essentially means that they break the sound waves and thereby dampen the sound.



# Class A Sound Absorption

Tired of your home sounding like an echo chamber?

Each Slat Acoustics Panel absorbs up to **100% of sound frequencies between 500-1000Hz**, making your space sound naturally warm and welcoming.



## About Installation

### FULLY CUSTOMIZABLE

Make it Yours From headboards, to TV walls, and anything in between, you can easily cut Willow Panels by hand to perfectly suit your project.



## Multiple application space

Primarily used in commercial spaces, our acoustic panels provide excellent sound reduction. Due to their warm soft aesthetics, more and more private clients are choosing them for their own residences.







## why we love this product:

### ① Look

It simply looks great and can transform a room. Great as a feature wall to add interest in domestic and commercial environments.

### ② Feel

Order a sample to feel for yourself but there is a lovely texture to the face of the slats of this product because of a unique veneer pressing process.

### ③ Installation Ease

Simply offer the panel to the wall and use black fixings which are barely visible through the black PET backing.

### ④ Value

Combining a sound absorbing PET backing and timber slats; there are few products in the market that offer this kind of aesthetic versus the material cost.

### ⑤ Quality

This is the original, high quality product manufactured in China.

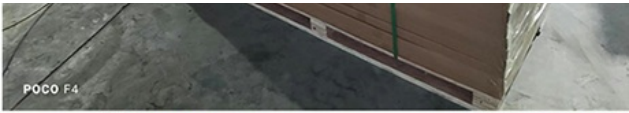
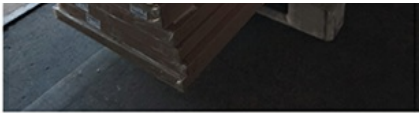
**Wooden Slat Acoustic Panel** is made from veneered lamellas on a bottom of a specially developed acoustic felt created from recycled material.

The handcrafted panels are not only designed to fit in with the latest trends but are also easy to install on your wall or ceiling. They help to create an environment that is not only quiet but beautifully contemporary, soothing and relaxing.

## Packaging & Shipping

## Package&Transport





#### Company Information



# About the Company

Magic Cube(MQ)Acoustics is a professional acoustic solution provider,integrating acoustic material manufacturing,architectural acoustical environment construction and industrial noise control.We are committed to the combination of Acoustics&Aesthetic,to offering our clients the best acoustic solution with high quality acoustic material.



The exhibition hall



In order to meet the higher needs of customers, we has introduced advanced production equipment which has fully guaranteed product quality and technology. After 5 years of rapid development, we has an annual output of more than 500,000 square meters of various acoustic materials.

## Certification

MAGIC CUBE Acoustics has focused on the R&D, production and sales of various sound absorption and sound insulation products. Our products have passed CE, ISO9001 & SGS certificate. MAGIC CUBE has more than a dozen patented acoustic technology products, and more than 30 domestic and international test reports.





## Team Activity



## Exhibition



### FAQ

#### What do I need for installation?

For installation, you will need a drill and any appropriate fastening hardware. For example, if you're mounting into drywall (rather than studs), you'll want to purchase drywall anchors with the appropriate screws. Please note screws are not included with the panel.

#### Can I cut the panels?



Yes, absolutely. The panels are easy to cut using a handsaw or a circular saw. Simply measure twice and cut once!

### **Can I hang a TV from the panels?**

We don't recommend hanging a TV directly from the panels, instead cut out a gap for the TV mount and mount it to your wall as you regularly would. From there, you can install the panels around the mount before hanging your TV from the mount.

### **How do I wash the panels?**

The best way to wash the slats is with a well-wrung cloth or duster. If you ever want to clean the felt between the slats, simply use a vacuum.



**Guangzhou Mq Acoustic Materials Co., Ltd**



18022418653



sales002@mq-acoustics.com



acousticpanelwalls.com

KeZhu Business Building, ZhuJi Road, TianHe District, GuangZhou, China